

EVALUATING RICE BLAST RESISTANCE IN EGYPTIAN GENOTYPES: A COMBINED PHENOTYPIC AND MOLECULAR APPROACH

ASMAA S. NOFAL¹, SAID S. SOLIMAN¹, TARIK A. ISMAIL¹, HANY Wafa¹, AREEJ S. JALAL^{2*},
SALHA MESFER ALSHAMRAN³, DIAA ABD EL-MONEIM⁴, Wael F. SHEHATA⁵,
WESSAM F. FELEMBAN^{6,7}, RAHMA ALSHAMRANI⁶ AND ABDALLAH A. HASSANIN¹

¹Genetics Department, Faculty of Agriculture, Zagazig University, Zagazig 44511, Egypt

²Department of Biology, College of Science, Princess Nourah bint Abdulrahman University, Riyadh 11671, Saudi Arabia

³Department of Biological Science, College of Science, University of Jeddah, Jeddah, Saudi Arabia 21959

⁴Department of Plant Production, (Genetic Branch), Faculty of Environmental and Agricultural Sciences, Arish University, El-Arish 45511, Egypt

⁵Department of Agricultural Biotechnology, College of Agriculture and Food Sciences, King Faisal University, Al-Ahsa 31982, Saudi Arabia

⁶Department of Biological Sciences, Faculty of Science, King Abdulaziz University, Jeddah, Saudi Arabia.

⁷Immunology Unit, King Fahad Medical Research Centre, King Abdulaziz University, Jeddah, Saudi Arabia

*Corresponding author's email: Asjalal@pnu.edu.sa

Abstract

Rice blast disease caused by the pathogen *Magnaporthe oryzae* is a destructive fungal disease of rice, causing significant yield losses and economic damage. Molecular screening and phenotypic assessment of blast resistance genes were conducted in five Egyptian rice genotypes: Sakha101, Sakha104, Orabi 4, Sakha101×Orabi 4, and Sakha104×Orabi 4. The severity and incidence of neck and leaf blast diseases were estimated using specific molecular markers. The highest neck and leaf blast incidence (54.44%) and (77.78%) were observed in Sakha 104 and Sakha101, respectively. Conversely, the lowest leaf and neck blast incidence (18.89% and 0%, respectively) was observed in Orabi 4. Leaf blast severity ranged from 48.09 % in Sakha104 to 10% in Orabi 4. The highest severity was recorded in Sakha 101 (38%), while neck blast severity was 0% at orabi4 and Sakha101×Orabi4. Five major rice blast resistance genes (*Pi-d2*, *Pi-z*, *Pi-9*, *Pi-37*, and *Pi-b*) were screened using molecular markers in the five studied genotypes. The results revealed that all genotypes were positive for the *Pi-d2*, *Pi-z*, and *Pi-b* markers except the absence of *Pi-b* marker in Sakha 104 genotype. All genotypes were negative for the *Pi-9* and *Pi-37* markers. The frequency of resistance genes (R genes) was 0% for *Pi-9* and *Pi-37* markers, 80% for *Pi-b*, and 100% for *Pi-d2* and *Pi-z*. The current study concludes that rice leaf and neck blast diseases are more prevalent in the Sakha101 and Sakha104 genotypes compared to the Orabi4, Sakha101×Orabi4, and Sakha104×Orabi4 genotypes. These genotype's resistance genes hold promise as sources for breeding programs aiming to develop blast-resistant rice cultivars in Egypt.

Key words: Molecular markers, R genes, Rice cultivars, Artificial infection, Disease incidence, Disease severity.

Introduction

Rice (*Oryza sativa*), one of the most important food crops worldwide, provides the main source of energy for over 50 % of the global population (Yu *et al.*, 2002; Gnanamanickam, 2009). Over 75% of the world's rice is produced and consumed in Asia, providing 35-75% of the calories consumed by more than three billion people, representing a significant portion of the region's food security (Khush & Jena, 2009). While rice production has doubled since 1966, it has failed to keep pace with the world's growing population. To meet the ever-growing demand for this staple food, rice production must increase by at least 40% by 2030 (Khush, 2005). The rapidly growing human population thus poses a significant challenge to ensuring food security in the future.

Rice blast is a devastating disease caused by *M. oryzae* (Couch & Kohn, 2002; Wang & Dean, 2022), affecting rice crops worldwide. The *M. oryzae* fungus colonizes various parts of the rice plant, including leaves (leaf blast), panicles (panicle blast), and others, leading to substantial crop losses in rice-growing regions. The disease's initial symptoms appear as tiny grayish or brown spots on the plant leaves. Yield losses due to blast disease have been reported to range from 30 to 50% in rice-producing areas (Skamnioti & Gurr, 2009). Tackling the persistent threat of rice blast disease is crucial for ensuring sustainable rice production and food security in the face of a growing global population (Mutiga

et al., 2021). Scientists are leading the effort to develop rice cultivars that exhibit durable blast resistance (Srivastava *et al.*, 2017). Sustained research on blast disease is essential to overcome this persistent threat and safeguard rice crops for future generations (Chakraborty *et al.*, 2021; Sahu *et al.*, 2022; Rajput *et al.*, 2024). Breeding rice cultivars for blast resistance is the most successful and sustainable method for managing rice blast disease, particularly in developing nations (Sahu *et al.*, 2022). The strategic deployment of cultivars harboring broad-spectrum resistance offers a practical and sustainable approach to controlling the fungal pathogen and safeguarding rice production, guaranteeing food security for a growing global population (Fukuoka *et al.*, 2015).

The discovery of molecular markers has revolutionized plant breeding (Al-Khayri *et al.*, 2022b; Abdelghaffar *et al.*, 2023; Al-Khayri *et al.*, 2023a; Essa *et al.*, 2023), enabling scientists to produce new rice cultivars with enhanced properties (Gong *et al.*, 2023).

There are two main categories of blast disease resistance: partial resistance and complete resistance (Wang *et al.*, 1994). Complete resistance is a qualitative trait effective only against a specific pathogen race, while partial resistance is a quantitative trait that provides some level of protection against all pathogen races (Young, 1994). Rice cultivars exhibit qualitative and quantitative resistance to the blast fungus (Shahriar *et al.*, 2020). The rice genome holds numerous major genes for qualitative blast resistance that

have been extensively studied and identified (Sharma *et al.*, 2012; Ashkani *et al.*, 2016a). Using a single R-gene with a wide-ranging resistance profile is advantageous in resistance breeding. Approximately 22 R-genes have been successfully identified and studied (Ashkani *et al.*, 2016b). Transferring these genes from wild rice species to popular rice cultivars has made them more resistant to blast disease. For example, the Pi-9 gene, first discovered in the indica rice line 75-1-127 (Liu *et al.*, 2002), was transferred from the wild rice species *Oryza minuta* (Amante-Bordeos *et al.*, 1992). Similarly, the Pi-ta gene was identified in *Oryza rufipogon* and *Oryza nivara* (Jena & Khush, 2000). Therefore, this study aimed to determine the Pi-blast resistance genes using SSR markers associated with the *Pi-d2*, *Pi-9*, *Pi-z*, *Pi-b*, and *Pi-37* genes in some Egyptian rice genotypes.

Material and Methods

Plant materials and pathogenicity assay: This study was conducted at the Faculty of Agriculture Zagazig University greenhouse. Five Egyptian rice genotypes were used in the current study: Sakha104, Sakha101, Orabi4, Sakha 101 x Orabi 4, and Sakha 104 x Orabi 4. Three-week-old rice seedlings (3-4 leaf stage) were grown in a greenhouse during the summer season (2021/2022) for pathogenicity assays and subsequent DNA extraction.

Inoculation followed a modified method based on Valent *et al.*, (1991). Plants were misted with a 45 ml suspension (100 kPa) in autoclaved polyethylene bags (24x36 cm, 1.5 mm) at ~95% humidity for 24 hours. They were then returned to the greenhouse for 6 days. Disease ratings (Tables 1 & S2) were assessed 7 days post-inoculation on 45 seedlings per genotype, with the experiment repeated three times.

Leaf blast evaluation: Leaf blast incidence (LBI): The upper three leaves on each of ten randomly chosen tillers from each genotype were assessed to measure the LBI. The percentage of affected leaves was then calculated (Chowdhury *et al.*, 2014).

Leaf blast severity (LBS): The blast severity of leaves was graded using the 0 to 9 scale proposed by Goto (1968) and Mackill & Bonman (1992) (Table S1). The following equations were used to calculate LBI and LBS:

$$\text{LBI (\%)} = \frac{\text{Number of diseased leaves}}{\text{Total number of leaves assessed}} \times 100$$

$$\text{LBS (\%)} = \frac{\sum nV}{N \times \text{Maximum grade}} \times 100$$

LBS = Leaf blast severity, \sum = Summation, n = The number of leaves with a specific score, V = Disease severity score (0-9 scale), N = Total number of examined leaves

Neck blast evaluation: Similar to leaf blast, the extent of neck blast was quantified using the 0 to 9 scale described in Table S2. Neck blast incidence (NBI) and neck blast severity (NBS) were calculated using the following equations:

$$\text{Neck blast incidence (\%)} = \frac{\text{Number of diseased panicles}}{\text{Total number of panicles assessed}} \times 100$$

$$\text{Neck blast severity (NBS) (\%)} = \frac{\sum nV}{N \times \text{Maximum grade}} \times 100$$

NBS = Neck blast severity, \sum = Summation, n = The number of panicles with a specific score, V = Disease severity score (0-9 scale), N = Total number of panicles studied.

DNA extraction and marker analysis: PCR analyses were performed on genomic DNA extracted from 100 mg of leaves from each genotype using a modified CTAB method (Warude *et al.*, 2003). Specific markers for six blast resistance genes (Table 1) were employed: Pi-d2 (Chen *et al.*, 2006), Pi-9 (Qu *et al.*, 2006), Pi-z and Pi-b (Hayashi *et al.*, 2006), Pi-37 (Sun, 2012). The PCR reaction mixture (25 μ L) contained 2.5 μ L of 10 \times LA PCR Buffer, 4 μ L of dNTP mixture, 1 μ L of each primer, 50 ng of DNA template, 0.25 μ L of TaKaRa LA Taq DNA polymerase, and ddH₂O. Amplification parameters were: initial denaturation at 94°C for 5 min, followed by 35 cycles of denaturation at 94°C for 30 sec, primer-specific annealing temperature for 45 sec (Table 1), extension at 72°C for 2 min, and a final extension at 72°C for 5 min. PCR products were separated into 2%–3% agarose gels in 1 \times TAE buffer for 90–120 min at 150 V and visualized with ethidium bromide. Presence or absence of DNA fragments was scored as 1 or 0, respectively.

Data collection: One week after inoculation, data on plant infection (%), leaf infection (%), number of lesions per leaf, lesion size (mm²), and disease severity scale (using the Standard Evaluation System from IRRI (2002)) were collected from 45 plants per treatment.

Data analysis: A complete randomized design (CRD) with three replicates was used for the greenhouse experiments. All phenotypic and genotypic data were organized using Microsoft Excel. Treatment means were compared using LSD_{0.05}.

Results

Phenotyping of leaf and neck blast disease: One month after sowing rice seeds (7 days after inoculation), disease scoring for rice blast was conducted based on leaf blast severity and neck blast severity using the SES scale (Goto, 1968; Mackill and Bonman, 1992) (Table S1 and Fig. 1A). Screening scores categorized the five rice genotypes into different susceptibility and resistance classes. The results of leaf blast screening indicated that Orabi 4 and Sakha101 x Orabi 4 genotypes were resistant (Score = 1), Sakha104 x Orabi 4 genotype was moderately resistant (score = 2), Sakha101 genotype was moderately susceptible (score = 4), while Sakha104 genotype was susceptible (score = 7) (Fig. 1B).

The results of neck blast screening indicated that Orabi 4 and Sakha101 x Orabi 4 genotypes were highly resistant (Score = 0), Sakha104 x Orabi 4 genotype was resistant (score = 1), Sakha104 genotype was moderately resistant (score = 3), while Sakha101 genotype was moderately susceptible (score = 5) (Fig. 1C).

Disease assessment: To estimate blast disease severity and incidence, the number of infected plants, the number of infected leaves, the number of lesions/leaves, and the number of infected panicles were measured for each genotype. The results showed that Sakha 104 genotype had the highest values for all measured parameters, followed by Sakha 101, Sakha104 × Orabi 4, and Sakha101 × Orabi 4 genotypes. Orabi 4 exhibited the lowest values for all parameters (Fig. 2). Furthermore, the severity and incidence of leaf blast disease were determined. The highest leaf blast incidence (77.7 %) and leaf blast severity (48.09%) occurred in Sakha 104 (Fig. 3A, C), while the lowest leaf blast incidence (18.8 %) and leaf blast severity (10 %) were observed in Orabi 4 (Fig. 3B, D).

Molecular screening of blast resistance genes (R genes): Five molecular markers were used to determine the presence or absence of the associated R-genes in the studied rice genotypes. All five genotypes exhibited bands for two or three R-genes-linked markers (Fig. 4 & Table 2). All genotypes displayed positive bands for the Pi-d2 (1057 bp) and Pi-z (292 bp) markers associated with major rice blast R-genes. In the same context, all genotypes except Sakha 104 were positive for the Pi-b marker (388 bp). Conversely, all genotypes were negative for the Pi-9 and Pi-37 markers. The frequency of the R-gene Pi-d2 and Pi-z were 100 %. The frequency of both Pi-9 and Pi-37 genes was zero, while the frequency of Pi-b was 80 % (Table 2).

Table S1. Leaf blast disease score for rice (Goto & Yamanaka, 1968; Mackill).

Grade	Disease severity	Host response
0.	No lesion observed	Highly resistant
1.	Small dark spots the size of a pin point	Resistant
2.	Small roundish to slightly elongated necrotic gray patches with a defined brown margin, about 1-2 millimeters in diameter. Lesions are most common on the bottom stems	Moderately resistant
3.	The sort of lesion is the same as in 2, but there are a large number of lesions on the upper leaves	Moderately resistant
4.	3 mm or longer vulnerable blast lesions affecting less than 4% of leaf area	Moderately susceptible
5.	Typical 3mm or longer vulnerable blast lesions affecting 4- 10% of the foliage region	Moderately susceptible
6.	Typical 3 mm or longer prone blast ulcers affecting 11- 25% of the foliage area	Susceptible
7.	Typical 3 mm or longer prone blast lesions affecting 26- 50% of the foliage area	Susceptible
8.	Many leaves are deceased due to typical susceptible blast lesions of 3 millimeters or longer infecting 51-75% of the leaf surface	Highly susceptible
9.	Typical vulnerable blast lesions of 3 millimeters or greater affecting more than 75% of the afflicted foliage area	Highly susceptible

Table S2. Neck blast disease score for rice (Goto & Yamanaka, 1968; Mackill & Bonman, 1992).

Neck blast score	Score description
0.	No apparent lesions or lesions on only a few pedicels
1.	lesions on multiple pedicels or secondary branches
3.	lesions on a few major branches or in the center of the panicle axis
5.	lesions centered on the root (node), topmost internodes, or the bottom portion of the panicle axis towards the base
7.	lesion around the panicle base, highest internodes, or panicle axis at the base with more than 30% filled grains
9.	lesion entirely encircling the panicle base, topmost internodes, or panicle axis at the base with less than 30% filled grains

Table 1. Details of forward and reverse primers associated with major rice blast resistant genes.

References	ES (bp)	AT (°C)	Primer sequence	Marker used	Chr. No.	R Gene
			Reverse 5'-3'	Forward 5'-3'		
(Chen <i>et al.</i> , 2006)	1057	55	atttgaagcggttgctgtaga	ttggctatcataggcgctcc		6 Pi-d2
(Qu <i>et al.</i> , 2006)	2000	56	ttgctccatctcctctgtt	atggctctttatctttattg	195R-1	6 Pi-9
(Hayashi <i>et al.</i> , 2006)	292	60	aggaatctattgctaagcatgac	ggacccgcgtttccacgtgtaa	Z56592	6 Pi-z
(Hayashi <i>et al.</i> , 2006)	388	60	atcaggccaggccagatttg	gactcggtcgaccaattcgcc	Pb28	2 Pi-b
(Hayashi <i>et al.</i> , 2006)	1149	55	cgaacagtggctggtatctc	tcttgagggtcccagtgatc		1 Pi-37

Chr, Chromosome; AT, Annealing temperature; ES, Expected size

Table 2. The presence and the absence of five markers associated with the blast R-genes in five Egyptian rice genotypes.

Genotypes	Pi-d2	Pi-z	Pi-9	Pi-37	Pi-b	Total genes
1. Sakha 101	1	1	0	0	1	3
2. Sakha101 x Orabi 4	1	1	0	0	1	3
3. Orabi 4	1	1	0	0	1	3
4. Sakha 104	1	1	0	0	0	2
5. Sakha104 x Orabi 4	1	1	0	0	1	3
R-gene frequency (%)	100%	100%	0%	0%	80%	

'1' denotes the presence of a given fragment and '0' denotes its absence

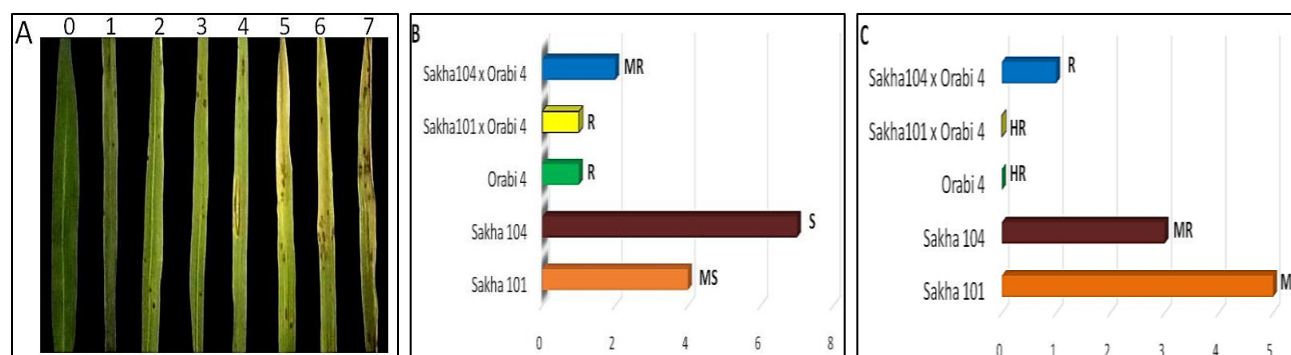


Fig. 1. (A) Leaf and neck blast scoring using 0-7 standard evaluation scale. Distribution of leaf blast (B) and neck blast (C) diseases score of the five Egyptian rice genotypes. Note: HR= Highly resistant, R=Resistant, MR=Moderately resistant, MS=Moderately susceptible and S=Susceptible.

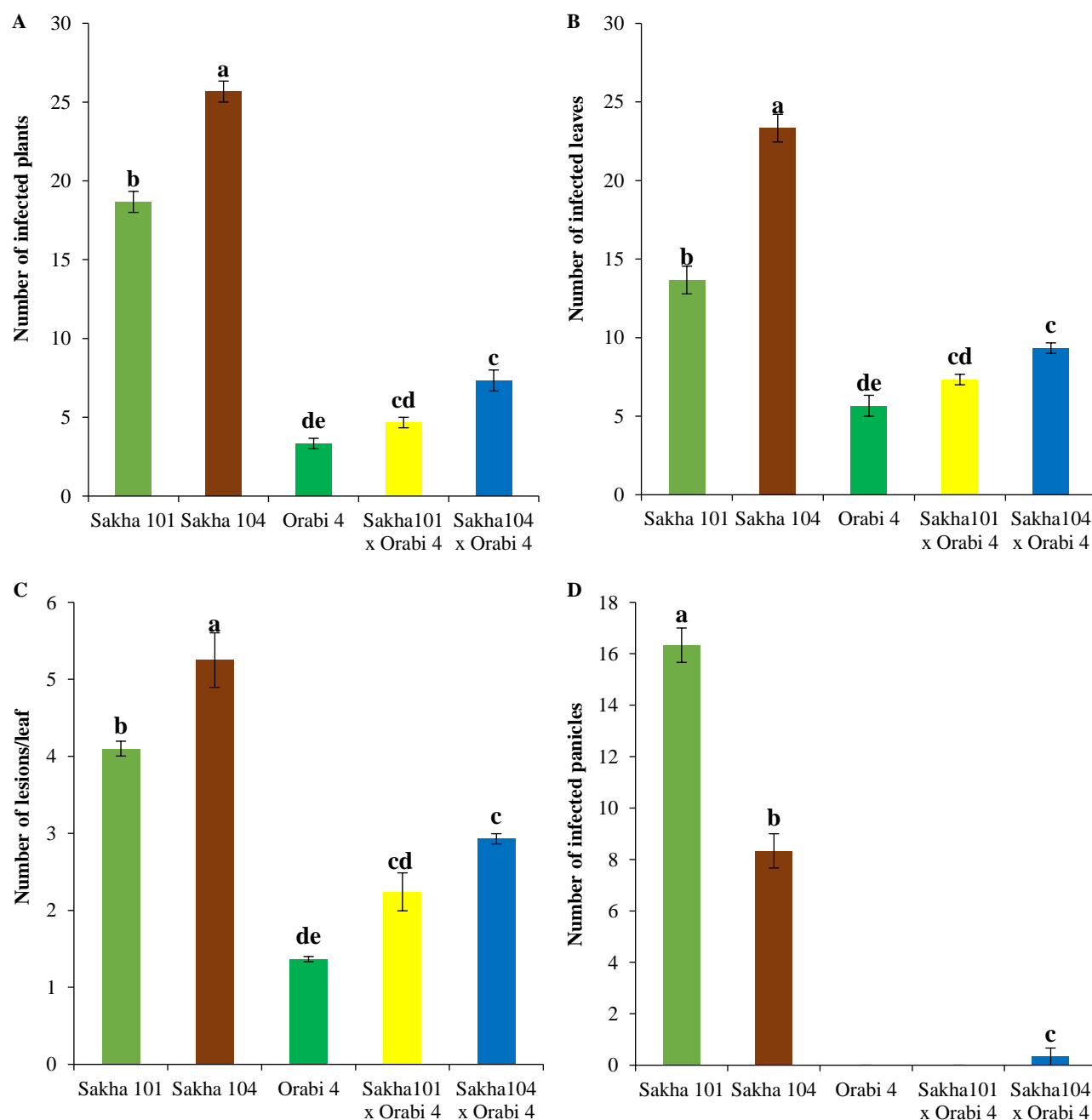


Fig. 2. Mean values for number of infected plants, number of infected leaves, number of lesions/ leaf and number of infected panicles of five Egyptian genotypes.

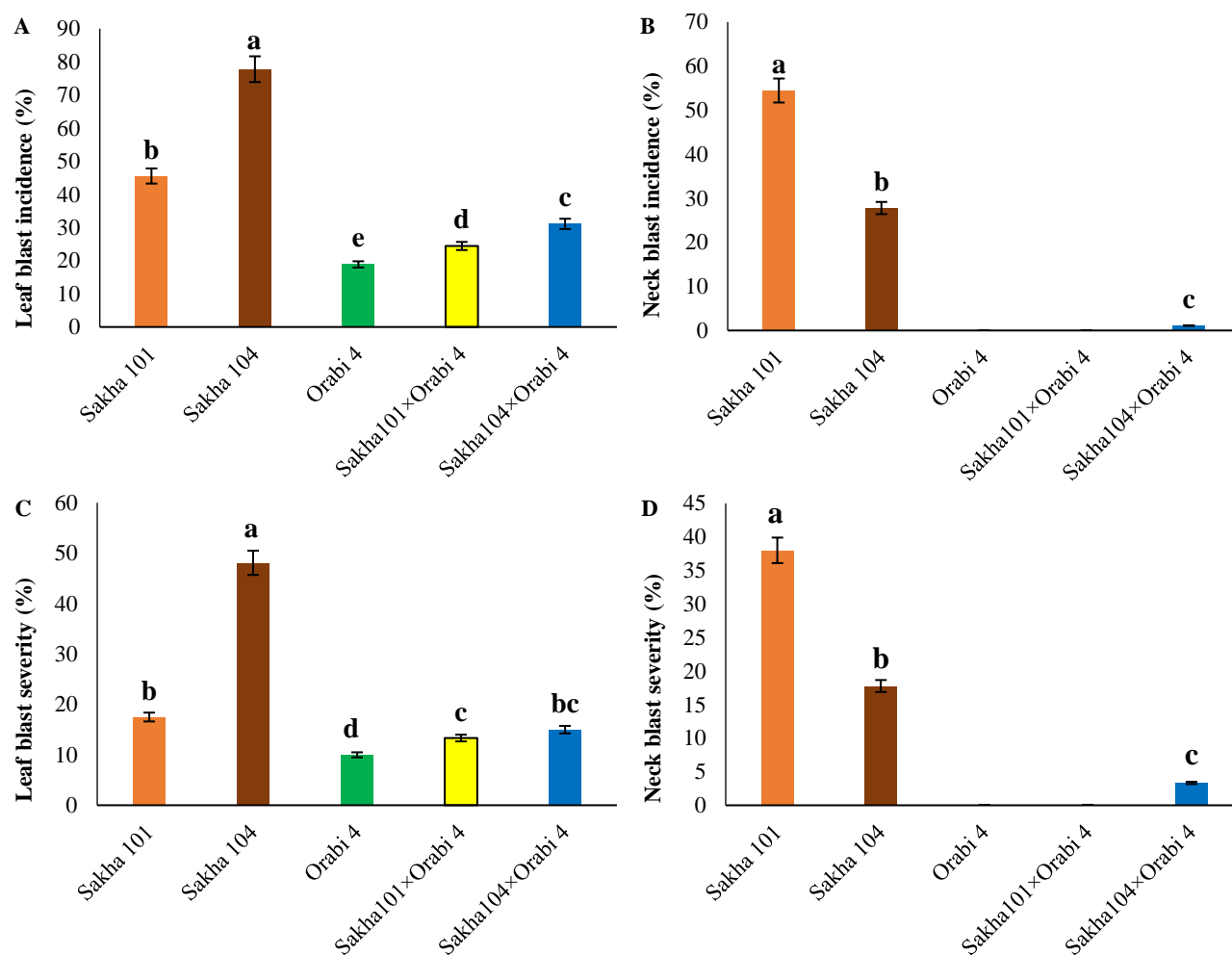


Fig. 3. Incidence and severity of neck and leaf blast diseases in five Egyptian rice genotypes. A. Leaf blast incidence (%). B. Neck blast incidence (%). C. Leaf blast severity (%). D. Neck blast severity (%).

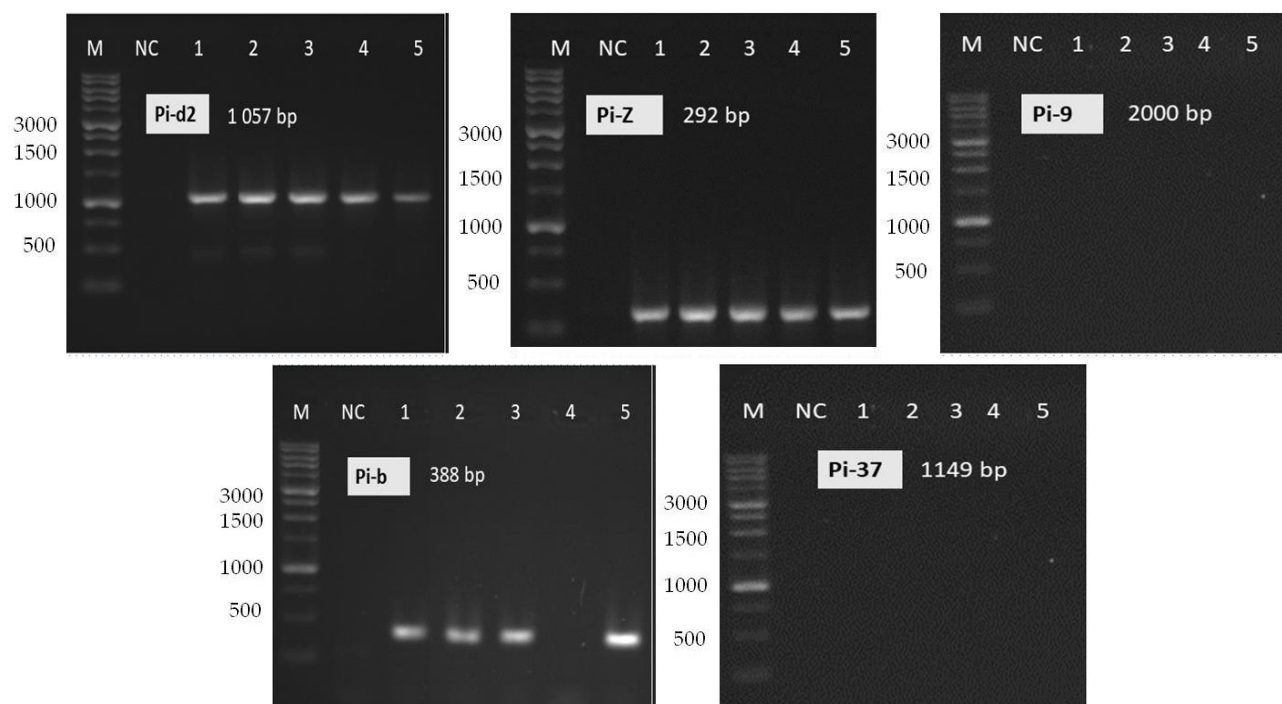


Fig. 4. The results of six SSR-PCR amplifications in five Egyptian rice genotypes. A. SSR-PCR profile of Pi-d2 marker. B. SSR-PCR profile of Pi-z marker. C. SSR-PCR profile of Pi-9 marker. D. SSR-PCR profile of Pi-b marker. E. SSR-PCR profile of Piz-t marker. F. SSR-PCR profile of Pi-37 marker. (M) 1 Kbp ladder, (NC) Negative Control, (1) Sakha 101, (2) Sakha101×Orabi 4, (3) Orabi 4, (4) Sakha 104, (5) Sakha104×Orabi 4.

Discussion

Rice blasts, caused by the fungus *M. oryzae*, are devastating diseases that infect various plant parts, with neck blasts being particularly severe (Crill *et al.*, 1982). However, its complexity hinders a full understanding of the pathogen's behavior and poses a barrier to developing a standardized screening technique (Paul *et al.*, 2022). Unlike leaf blast, for which well-defined screening methods exist, neck blast evaluation remains less established. Thus, this study aimed to establish a suitable environment for accurately evaluating neck blast resistance phenotypes in rice. A uniform blast nursery with controlled *M. oryzae* inoculation was employed to evaluate the blast resistance of five rice genotypes. The 0-7 standard evaluation scale from IRRI (2002) was used to assess the resistance of five rice genotypes. The standard 0-7 evaluation scale from IRRI (2002). IRRI (2002) was used to score their responses, and each genotype was subsequently classified into a corresponding resistance category. None of the tested genotypes exhibited complete resistance (score 0) to leaf blast based on the IRRI scale. However, Orabi 4 and Sakha101 x Orabi 4 displayed strong resistance (score 1), while Sakha104 x Orabi 4 was moderately resistant (score 2). Sakha101 was moderately susceptible (score 4), and Sakha104 was susceptible (score 7) to leaf blast disease. Our findings align with Sowmya *et al.*, (2014), who reported high susceptibility in HR 12, while Yan *et al.*, (2017) observed a wider range of resistance levels, with 30 genotypes resistant (score 0-3), one moderately resistant, and only one susceptible.

Integrating key rice blast resistance genes into susceptible varieties is a highly effective strategy in protecting yields from *M. oryzae* devastation. In this study, genotyping with blast resistance markers allowed for determining R-genes in the rice genotypes. This information is valuable for breeding programs to develop multi-disease-resistant rice cultivars. We employed blast resistance-specific markers to genotype five Egyptian rice genotypes. This analysis successfully identified five major genes (Pi-9, Pi-z, Pi-d2, Pi-37, and Pi-b) with varying genetic frequencies (0% to 100%) across the resistant genotypes, providing valuable insights for future breeding efforts. Our findings on diverse gene presence are similar to those of Kim *et al.*, (2010) and Imam *et al.*, (2014), who reported a wide range of resistance gene frequencies in their studies. Singh *et al.*, (2015) also observed similar variability. The observed variation in gene frequencies across the five Egyptian genotypes (0% to 100%) aligns with these previous reports. The genotyping results showed four genotypes were positive for three of five blast resistance genes, while Sakha 104 was positive for two. This finding may explain the spectrum of blast resistance observed in these genotypes. Additionally, these genotypes can be used as sources of R-genes in rice breeding programs. An interesting observation was that in Pi-b (388 bp) profile of Figure 4, the fifth genotype (Sakha 104 x Orabi 4) harbored the Pi-b marker while the fourth genotype (Sakha 104) lacked this marker. These results suggest that the Sakha 104 x Orabi 4 genotype inherited the Pi-b gene from its Orabi 4 parent.

Marker-assisted selection has facilitated the development of numerous rice cultivars by pinpointing key resistance genes. However, its effectiveness relies on the reliability of the employed markers (Imam *et al.*, 2014). Our genotyping results for blast resistance genes reinforce the notion that established DNA markers targeting important genes are invaluable tools for identifying and confirming their presence in rice germplasm, ultimately aiding in screening and selection processes (Roy chowdhury *et al.*, 2012; Singh *et al.*, 2015).

This study supports the breeding of rice for blast resistance. However, other methods, such as using mutagenesis (Mohsen *et al.*, 2023), bioinformatics and molecular markers (Al-Khayri *et al.*, 2022a; Ghareeb *et al.*, 2022; Hassanin *et al.*, 2022; Al-Khayri *et al.*, 2023b; Ezzat *et al.*, 2024) can also be employed for genetic improvement for various rice characteristics.

Conclusions

This study successfully assessed the susceptibility of five Egyptian rice genotypes to rice blast disease caused by *Magnaporthe oryzae*. Our results indicate that Sakha101 and Sakha 104 are highly susceptible to both leaf and neck blast, while Orabi 4, Sakha 101 x Orabi 4, and Sakha 104 x Orabi 4 exhibit significantly lower infection rates. Molecular marker analysis revealed the presence of three resistance genes (Pi-d2, Pi-z, and Pi-b) in most genotypes, except for the absence of Pi-b in Sakha104. The high prevalence of Pi-d2 and Pi-z genes suggests their potential value in breeding programs to develop durable resistance against rice blast. Furthermore, Orabi4 and its hybrid progenies emerged as promising sources of resistance for future breeding efforts. To further advance rice blast resistance breeding in Egypt, a comprehensive genetic analysis is crucial. Whole-genome sequencing can be employed to identify additional resistance genes and quantitative trait loci (QTLs) associated with blast resistance. Comparative genomics can be utilized to compare the genomes of resistant and susceptible genotypes, pinpointing specific genetic regions responsible for resistance. Additionally, biotechnological approaches such as genetic engineering can be employed to introduce novel resistance genes or modify existing ones to enhance resistance. This can be achieved through the development of transgenic rice lines expressing resistance genes from other plant species or synthetic resistance genes.

Acknowledgments

The authors extend their appreciation for the Princess Nourah-bint-Abdulrahman University Researchers Supporting Project number (PNURSP2025R366), Princess Nourah-bint-Abdulrahman University, Riyadh, Saudi Arabia and the Deanship of Scientific Research, Vice Presidency for Graduate Studies and Scientific Research, King Faisal University, Saudi Arabia [Project No. KFU241922].

Funding

This research was funded by Princess Nourah-bint-Abdulrahman University Researchers Supporting Project number (PNURSP2025R366), Princess Nourah-bint-Abdulrahman University, Riyadh, Saudi Arabia and the Deanship of Scientific Research, Vice Presidency for Graduate Studies and Scientific Research, King Faisal University, Saudi Arabia [Project No. KFU241922].

References

- Abdelghaffar, A.M., R.M. Alshegaihi, M.A. Alkhateeb, R. Alshamrani, A.O. Abuzaid, S. Soliman, T. Ismail, A. Elzohery, D. Abd El-Moneim, W.F. Felemban, A.S. Almoshadak and A.A. Hassanin. 2023. Genetic diversity assessment and *In vitro* propagation of some date palm (*Phoenix dactylifera* L.) varieties. *Not Bot Horti Agrobi.* 51: 13449.
- Al-Khayri, J., A. Abdel Latef, H. Taha, A. Eldomiaty, M. Abd-Elfattah, W. Rezk, A., Shehata, M. Awad, T. Shalaby and M. Sattar. 2022a. *In silico* profiling of proline biosynthesis and degradation related genes during fruit development of tomato. *SABRAO J. Breed. Genet.*, 54: 549-564.
- Al-Khayri, J.M., S.M. Alshamrani, A.A. Rezk, W.F. Shehata, M.I. Almaghasla, T.A. Shalaby, A.M. Saad, F.A. Safhi, M.N. Sattar, A.A.A. Latef, M.Z. Sitohy and A.A. Hassanin. 2023a. Pre-breeding genetic diversity assessment of tomato (*Solanum lycopersicum* L.) cultivars based on molecular, morphological and physicochemical parameters. *Phyton-Int. J. Exp. Bot.*, 92.
- Al-Khayri, J.M., K.M. Alwutayd, F.A. Safhi, M.M. Alqahtani, R.M. Alshegaihi, D. Abd El-Moneim, S.M. Jain, A.S. Eldomiaty, R. Alshamrani and A.O. Abuzaid. 2023b. Assessment of intra- and inter-genetic diversity in tetraploid and hexaploid wheat genotypes based on omega, gamma and alpha-gliadin profiles. *Peer. J.*, 11: e16330.
- Al-Khayri, J.M., E.M.B. Mahdy, H.S.A. Taha, A.S. Eldomiaty, M.A. Abd-Elfattah, A.A.H. Abdel Latef, A.A. Rezk, W.F. Shehata, M.I. Almaghasla, T.A. Shalaby, M.N. Sattar, H.S. Ghazzawy, M.F. Awad, K.M. Alali, S.M. Jain and A.A. Hassanin. 2022b. Genetic and morphological diversity assessment of five kalanchoe genotypes by SCoT, ISSR and RAPD-PCR Markers. *Plants*, 11: 1722.
- Amante-Bordeos, A., L. Sitch, R. Nelson, R. Dalmacio, N. Oliva, H. Aswidinnoor and H. Leung. 1992. Transfer of bacterial blight and blast resistance from the tetraploid wild rice *Oryza minuta* to cultivated rice, *Oryza sativa*. *Theor. Appl. Genet.*, 84: 345-354.
- Ashkani, S., M. Rafii, M. Shabanmofrad, A. Ghasemzadeh, S. Ravanfar and M. Latif. 2016a. Molecular progress on the mapping and cloning of functional genes for blast disease in rice (*Oryza sativa* L.): Current status and future considerations. *Crit. Rev. Biotechnol.*, 36: 353-367.
- Ashkani, S., M.Y. Rafii, M. Shabanmofrad, A. Ghasemzadeh, S.A. Ravanfar and M.A. Latif. 2016b. Molecular progress on the mapping and cloning of functional genes for blast disease in rice (*Oryza sativa* L.): current status and future considerations. *Crit. Rev. Biotechnol.*, 36: 353-367.
- Chakraborty, M., N.U. Mahmud, C. Ullah, M. Rahman and T. Islam. 2021. Biological and biorational management of blast diseases in cereals caused by *Magnaporthe oryzae*. *Crit. Rev. Biotechnol.*, 41: 994-1022.
- Chen, X., J. Shang, D. Chen, C. Lei, Y. Zou, W. Zhai, G. Liu, J. Xu, Z. Ling and G. Cao. 2006. AB-lectin receptor kinase gene conferring rice blast resistance. *Plant J.*, 46: 794-804.
- Chowdhury, M.R., V. Kumar, A. Sattar and K. Brahmachari. 2014. Studies on the water use efficiency and nutrient uptake by rice under system of intensification. *The Bioscan.*, 9: 85-88.
- Couch, B.C. and L.M. Kohn. 2002. A multilocus gene genealogy concordant with host preference indicates segregation of a new species, *Magnaporthe oryzae*, from *M. grisea*. *Mycologia*, 94: 683-693.
- Crill, P., H. Ikehashi and H. Beachell. 1982. Rice blast control strategies. *Rice research strategies for the future. International Rice Research Institute, Manila, Philippines*: 129-146.
- Essa, S.M., H.A. Wafa, E.-S.I. Mahgoub, A.A. Hassanin, J.M. Al-Khayri, A.S. Jalal, D.A. El-Moneim, S.M. Alshamrani, F.A. Safhi and A.S. Eldomiaty. 2023. Assessment of eight faba bean (*Vicia faba* L.) cultivars for drought stress tolerance through molecular, morphological, and physiochemical parameters. *Sustainability*, 15: 3291.
- Ezzat, M.A., N.M. Alotaibi, S.S. Soliman, M. Sultan, M.M. Kamara, D. Abd El-Moneim, W.F. Felemban, N.M. Al Aboud, M. Aljabri, I.B. Abdelmalek, E. Mansour and A.A. Hassanin. 2024. Molecular and agro-morphological diversity assessment of some bread wheat genotypes and their crosses for drought tolerance. *Peer. J.*, 12: e18104.
- Fukuoka, S., N. Saka, Y. Mizukami, H. Koga, U. Yamanouchi, Y. Yoshioka, N. Hayashi, K. Ebana, R. Mizobuchi and M. Yano. 2015. Gene pyramiding enhances durable blast disease resistance in rice. *Scientific Reports*, 5: 7773.
- Ghareeb, Y.E., S.S. Soliman, T.A. Ismail, M.A. Hassan, M.A. Abdelkader, A.A.H. Abdel Latef, J.M. Al-Khayri, S.M. Alshamrani, F.A. Safhi, M.F. Awad, D.A. El-Moneim and A.A. Hassanin. 2022. Improvement of german chamomile (*Matricaria recutita* L.) for mechanical harvesting, high flower yield and essential oil content using physical and chemical mutagenesis. *Plants*, 11: 2940.
- Gnanamanickam, S.S. 2009. Rice and its importance to human life, In: (Ed.): Gnanamanickam, S.S. *Biological Control of Rice Diseases*. Springer Netherlands, Dordrecht, pp. 1-11.
- Gong, D., X. Zhang, F. He, Y. Chen, R. Li, J. Yao, M. Zhang, W. Zheng and G. Yu. 2023. Genetic improvements in rice grain quality: A review of elite genes and their applications in molecular breeding. *Agronomy*, 13(5): 1375.
- Goto, K. 1968. Studies on the race of rice blast fungus. *Bull Coll Agri Utsunomiya Univ.*, 7: 27-71.
- Hassanin, A.A., A. Osman, O.O. Atallah, M.T. El-Saadony, S.A. Abdelnour, H.S.A. Taha, M.F. Awad, H. Elkashef, A.E. Ahmed, I. Abd El-Rahim, A. Mohamed and A.S. Eldomiaty. 2022. Phylogenetic comparative analysis: Chemical and biological features of caseins (alpha-S-1, alpha-S-2, beta- and kappa-) in domestic dairy animals. *Front. Vet. Sci.*, 9: p. 952319.
- Hayashi, K., H. Yoshida and I. Ashikawa. 2006. Development of PCR-based allele-specific and InDel marker sets for nine rice blast resistance genes. *Theor. Appl. Genet.*, 113: 251-260.
- Imam, J., S. Alam, N.P. Mandal, M. Variar and P. Shukla. 2014. Molecular screening for identification of blast resistance genes in North East and Eastern Indian rice germplasm (*Oryza sativa* L.) with PCR based makers. *Euphytica*, 196: 199-211.
- IRRI. 2002. Standard evaluation system for rice. *International Rice Research Institute, Philippine*: 1-45.
- Jena, K. and G. Khush. 2000. Exploitation of species in rice improvement-opportunities, achievements and future challenges. *Rice Breeding and Genetic Research Priorities and Challenges*: 269-284.
- Khush, G.S. 2005. What it will take to Feed 5.0 Billion Rice consumers in 2030. *Plant Mol. Biol. Rep.*, 59: 1-6.
- Khush, G.S. and K. Jena. 2009. Current status and future prospects for research on blast resistance in rice (*Oryza sativa* L.). *Advances in genetics, genomics and control of rice blast disease*: 1-10.

- Kim, J.S., S.N. Ahn, C.K. Kim and C.K. Shim. 2010. Screening of rice blast resistance genes from aromatic rice germplasms with SNP markers. *Plant Pathol. J.*, 26: 70-79.
- Liu, G., G. Lu, L. Zeng and G.-L. Wang. 2002. Two broad-spectrum blast resistance genes, Pi9 (t) and Pi2 (t), are physically linked on rice chromosome 6. *Mol. Genet. Genomic*, 267: 472-480.
- Mackill, D. and J. Bonman. 1992. Inheritance of blast resistance in near-isogenic lines of rice. *Phytopathology*, 82: 746-749.
- Mohsen, G., S.S. Soliman, E.I. Mahgoub, T.A. Ismail, E. Mansour, K.M. Alwutayd, F.A. Safhi, D. Abd El-Moneim, R. Alshamrani and O.O. Atallah. 2023. Gamma-rays induced mutations increase soybean oil and protein contents. *Peer. J.*, 11: e16395.
- Mutiga, S.K., F. Rotich, V.M. Were, J.M. Kimani, D.T. Mwongera, E. Mgonja, G. Onaga, K. Konaté, C. Razanaboahirana and J. Bigirimana. 2021. Integrated strategies for durable rice blast resistance in sub-Saharan Africa. *Plant Disease*, 105: 2749-2770.
- Paul, S.K., N.U. Mahmud, D.R. Gupta, K. Rani, H. Kang, G.-L. Wang, L. Jankuloski and T. Islam. 2022. *Oryzae pathotype* of *Magnaporthe oryzae* can cause typical blast disease symptoms on both leaves and spikes of wheat under a growth room condition. *Phytopathology Research*, 4: 9.
- Qu, S., G. Liu, B. Zhou, M. Bellizzi, L. Zeng, L. Dai, B. Han and G.-L. Wang. 2006. The broad-spectrum blast resistance gene Pi9 encodes a nucleotide-binding site-leucine-rich repeat protein and is a member of a multigene family in rice. *Genetics*, 172: 1901-1914.
- Rajput, N., M.U. Younas, M. Qasim, S.P. Memon, S. Memon, M.A. El-Rahman, S. Aghayeva, S. Ercisli, R. Iqbal and S. Zuo. 2024. Understanding rice blast: investigating biotechnological methods to speed up the development of robust rice cultivars. *Genet Resour Crop Evol*: in press.
- Roy Chowdhury, M., Y. Jia, M. Jia, R. Fjellstrom and R. Cartwright. 2012. Identification of the rice blast resistance gene Pib in the national small grains collection. *Phytopathology*, 102: 700-706.
- Sahu, P.K., R. Sao, D.K. Choudhary, A. Thada, V. Kumar, S. Mondal, B.K. Das, L. Jankuloski and D. Sharma. 2022. Advancement in the breeding, biotechnological and genomic tools towards development of durable genetic resistance against the rice blast disease. *Plants*, 11: 2386.
- Shahriar, S.A., A.A. Imtiaz, M.B. Hossain, A. Husna, M. Eaty and N. Khatun. 2020. Rice blast disease. *Annu. Res. Rev. Biol.*, 35: 50-64.
- Sharma, T., A. Rai, S. Gupta, J. Vijayan, B. Devanna and S. Ray. 2012. Rice blast management through host-plant resistance: retrospect and prospects. *Agric. Res.*, 1: 37-52.
- Singh, A.K., P. Singh, M. Arya, N. Singh and U. Singh. 2015. Molecular screening of blast resistance genes in rice using SSR markers. *Plant Pathol. J.*, 31: 12.
- Skamnioti, P. and S.J. Gurr. 2009. Against the grain: safeguarding rice from rice blast disease. *Trends Biotechnol.*, 27: 141-150.
- Sowmya, H., S. Prashanthi and Y. Hegde. 2014. Traditional landraces of rice for blast (*Magnaporthe oryzae*) resistance and analysis of biochemical components involved in disease reaction. *Asian Journal of Bio. Science*, 9: 261-266.
- Srivastava, D., M. Shamim, M. Kumar, A. Mishra, P. Pandey, D. Kumar, P. Yadav, M.H. Siddiqui and K.N. Singh. 2017. Current status of conventional and molecular interventions for blast resistance in rice. *Rice Science*, 24: 299-321.
- Valent, B., L. Farrall and F.G. Chumley. 1991. *Magnaporthe grisea* genes for pathogenicity and virulence identified through a series of backcrosses. *Genetics*, 127: 87-101.
- Wang, G.-L., D.J. Mackill, J.M. Bonman, S.R. McCouch, M.C. Champoux and R.J. Nelson. 1994. RFLP mapping of genes conferring complete and partial resistance to blast in a durably resistant rice cultivar. *Genetics*, 136: 1421-1434.
- Wang, M. and R.A. Dean. 2022. Host induced gene silencing of *Magnaporthe oryzae* by targeting pathogenicity and development genes to control rice blast disease. *Front. Plant Sci.*, 13: p.959641.
- Warude, D., P. Chavan, K. Joshi and B. Patwardhan. 2003. DNA isolation from fresh, dry plant samples with highly acidic tissue extracts. *Plant Mol. Biol. Rep.*, 21: 467-467.
- Yan, L., Y. Bai-Yuan, P. Yun-Liang, J. Zhi-Juan, Z. Yu-Xiang, W. Han-Lin and Y. Chang-Deng. 2017. Molecular screening of blast resistance genes in rice germplasms resistant to *Magnaporthe oryzae*. *Rice Science*, 24: 41-47.
- Young, N.D. 1994. Constructing a plant genetic linkage map with DNA markers, DNA-based markers in plants. Springer, pp. 39-57.
- Yu, J., S. Hu, J. Wang, G.K.-S. Wong, S. Li, B. Liu, Y. Deng, L. Dai, Y. Zhou and X. Zhang. 2002. A draft sequence of the rice genome (*Oryza sativa* L. ssp. *indica*). *Science*, 296: 79-92.

(Received for publication 12 March 2024)