

# AN INVESTIGATION ON THE SEASONAL VARIATION OF THE PHYTOPLANKTON DENSITY ON THE SURFACE WATER OF SAPANCA LAKE, TURKEY

NEŞE YILMAZ\* AND GÜLER AYKULU

*Department of Freshwater Biology,  
Faculty of Fisheries, Istanbul University, 34470, Istanbul, Turkey.*

## Abstract

Seasonal variations of phytoplankton composition and density of Lake Sapanca, were investigated on the littoral and pelagic sample station points between December 1999 and February 2001. Samples were collected monthly from 4 stations which were chosen in the west part of the lake. At each station, water samples were obtained at three site. The first sites were at the closest point to the shore. In addition, there is 100 m distance between each sites. In total 54 phytoplankton species were recorded: Bacillariophyta 30, Chlorophyta 12, Cyanophyta 5, Euglenophyta 3, Dinophyta 2, Chrysophyta 1 and Cryptophyta 1. Bacillariophyta, Chlorophyta and Cyanophyta constituted majority of the phytoplankton both in terms of species numbers and density. No apparent differences were found in phytoplankton composition at three sampling sites of each station. In general, surface phytoplankton were found to be rather poor as it was in the previous quantitative phytoplankton studies carried-out in the lake. Chlorophyll-*a* concentrations were measured higher (8.39- 21.79 mg/m<sup>3</sup>) than the previous studies.

## Introduction

Standing at the bottom level of the food chain, phytoplankton bear a significant importance in respect of their role in aquatic ecosystems and their relations with other living organisms at upper levels. Phytoplankton is one of the top living groups, which react fast to pollution in aquatic environment. The composition of phytoplankton is utilized to identify the trophic state, productivity rate, nutrient level, water quality and pollution of lakes (Reynolds, 1998).

Lake Sapanca which is located in the Marmara Region, is a prominently significant lake, in respect of economic-sportive fishing, recreation-tourism and drinking water. The lake provides drinking water for the city of Adapazarı and the lake water is also used for cooling purposes in the industries in İzmit area (DSİ, 1989).

Several studies have been carried out in Lake Sapanca (Yücetaş, 1975; Artüz, 1983; DSİ, 1984; Worthmann *et. al.*, 1985; Tuğrul *et. al.*, 1989; Tüfekçi, 1999). Earlier works have dealt with some limnological characteristics and pollution level of lake, while knowledge on the phytoplankton was rather scarce. The first quantitative study of phytoplankton was done by Temel (1991). Subsequently, the phytoplankton and zooplankton compositions and their relations with water quality of the lake water was investigated by Aykulu *et. al.*, (1999, 2006). Studies have been studied mainly in pelagic region and at the deepest points of the lake. The first sampling sites were at the closest point to the shore and there is 100 m distance between each sites. The aim of the present study was to determine the coastal impact on the phytoplankton, and whether there are any disparities comparing to open water regarding the aspects of composition and density.

---

\*E-mail: nyilmaz@istanbul.edu.tr neseyilmaz27@hotmail.com Fax: +90 212 514 03 79

## Materials and Methods

**Study site:** Lake Sapanca is located ( $40^{\circ} 41' N - 40^{\circ} 44' N$  and  $30^{\circ} 09' E - 30^{\circ} 20' E$ ) in a tectonic depression and separated from Izmit Bay in the Sea of Marmara by accumulation of alluvial deposits (Temel, 1991). The lake has a  $46.8 \text{ km}^2$  surface area with maximum depth 52 meters and an elevation of 30 m sea level (DSI., 1989). There is only one outflow, Çark Stream, which is at the eastern part of the lake. The lake is fed by several streams with seasonally changing flow rates. The retention time of the lake is 7 years (DSI., 1984).

**Sampling:** Four sampling stations were chosen in the west part of the lake. In total 12 sampling points were designated belonging to 4 stations. In each station closest point of the shore showed with A, 100 m forward with B and 200 m forward with C (Fig. 1). Samples were taken monthly from surface with a water sampler.

**Physicochemical variables:** Temperature and dissolved oxygen were measured using an oxi 330 /set model Oxygen meter, transparency was measured with a Secchi disc at sampling time. Nitrate azote ( $\text{NO}_3\text{-N}$ ) and orthophosphate ( $\text{PO}_4\text{-P}$ ) content in the water samples were measured with the help of Dr. Lange make kits; the pH was measured in the laboratory by using a Knick model pH meter.

**Phytoplankton:** Water samples for phytoplankton identification and counting were fixed with Lugol's iodine. Phytoplankters were counted with an inverted microscope according to Lund *et al.*, (1958). Identification followed Patrick-Reimer (1966, 1975), Huber-Pestalozzi (1975), Krammer & Lange-Bertalot (1986), Hustedt (1930, 1985) and Prescott (1961, 1964). Chlorophyll-*a* content was measured according to Parsons & Strickland (1963).

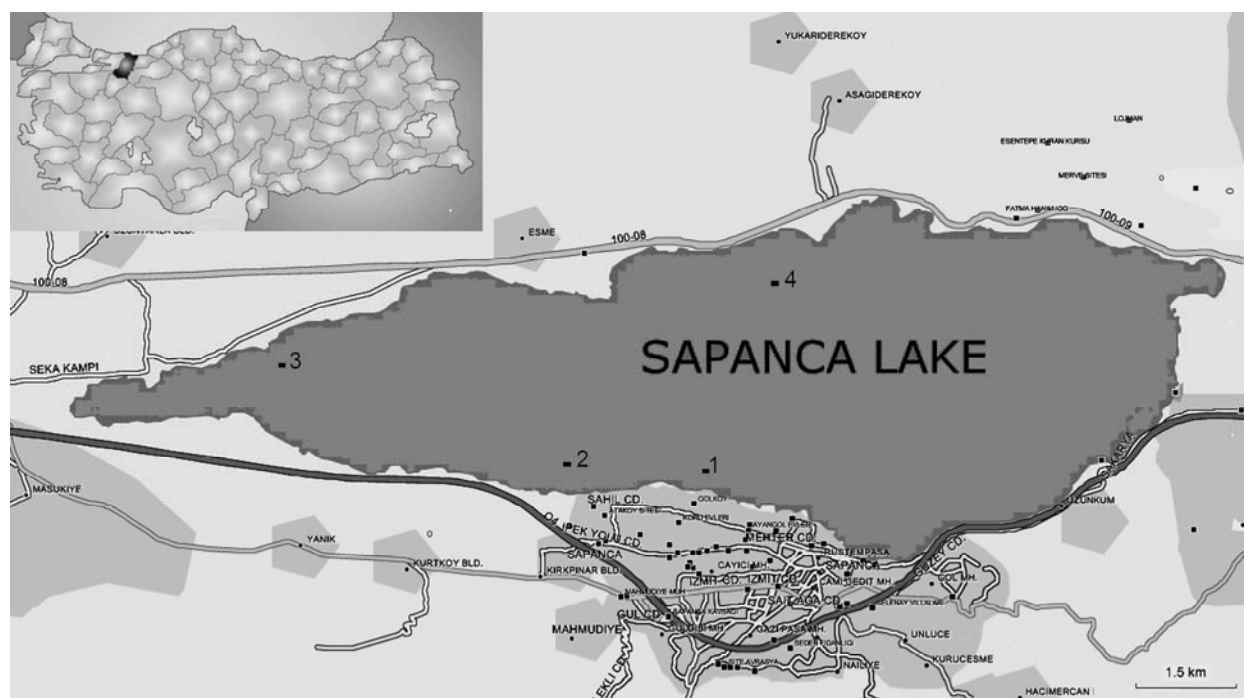


Fig. 1. Map and location of Lake Sapanca and sampling sites.

## Results

**Physicochemical variables:** During the study the surface water temperature varied between 27.4 and 6.5°C, Secchi-depth varied between 0.9 and 7.0 m. The dissolved oxygen concentrations ranged between 14.59 and 3.84 mg l<sup>-1</sup> and pH values ranged between 7.70-8.55 in the surface water. The measured nitrate values changed between 0.043-0.344 mg l<sup>-1</sup> and orthophosphate values changed between 0.006-0.063 mg l<sup>-1</sup> in the surface water in March, April, June and October 2000. Some measured physicochemical variables and chlorophyll- *a* content of Lake Sapanca were given in Table 1.

**Phytoplankton composition and seasonal changes of phytoplankton density:** In total, 54 taxa from the following groups were recorded in the surface water of Lake Sapanca: Bacillariophyta 30 (55.5%), Chlorophyta 12 (22.2%), Cyanophyta 5 (9.2%), Euglenophyta 3 (5.5%) Chrysophyta 1 (1.85%), Cryptophyta 1 (1.85%) and Dinophyta 2 (3.7%). The presence of the taxa of the phytoplankton at the sampling stations was given in Table 2. General phytoplankton numbers increased in April 2000 and December 2000. The lowest density was recorded in February 2000, November 2000 and July 2000. No apparent differences were found in phytoplankton growth at each station and their sampling sites. The seasonal changes of density of phytoplankton groups of Lake Sapanca were shown in Fig. 2a-d.

During the study 5 centric and 25 pennate diatoms belonging to the Bacillariophyta division were recorded. The centric diatom *Cyclotella ocellata* Pantocsek was recorded more frequently than other species. Pennate diatoms in terms of species variation were rich and represented by 25 taxa. The pennate diatoms *Synedra acus* Kuetzing and *Synedra ulna* (Nitzsch) Ehrenberg were found commonly in all sampling stations. *Nitzschia* species were recorded in each sampling time but did not develop in high numbers. The dominant species was *Asterionella formosa* Hassall of Bacillariophyta. Other pennate diatoms occurred sporadically on the phytoplankton.

Members of the Chlorophyta were the second dominant group in terms of species numbers and density following the Bacillariophyta division. Chlorophyta was represented by 12 taxa belonging to 3 order. It was identified 9 species belonging to Chlorococcales where identified of Lake Sapanca. *Monorapidium falcatus* was recorded frequently and abundantly at each stations. *Scenedesmus dimorphus* (Turpin) Kuetzing and *Scenedesmus quadricauda* (Turpin) Brebisson were found more abundant at the shore sampling sites. *Kirchineriella* sp. was found in small numbers and found usually on the phytoplankton during the study. Desmidiiales order was represented by *Cosmarium formosulum* Hofmann which was recorded rarely and in low numbers in Lake Sapanca. The order Zygnematales was represented by *Mougeotia* sp. which was found more abundant at the shore sampling points. Volvocales order in terms of individual number and frequency was recorded in unimportant numbers than Chlorococcales and Zygnematales orders.

Members of Cyanophyta generally were found in lower numbers than members of Chlorophyta. It was represented by 5 taxa. Belonging to Cyanophyta division the *Planktothrix rubescens* (De Candolle ex Gomont) Anagnostidis & Komárek was the most abundant and most frequent species. Generally *P. rubescens* was found more abundant at the shore sampling points. Other species were recorded rare and in low numbers.

Table 1. Minimum, maximum, average and standard error values of some physicochemical parameters and chlorophyll- *a* of Sapanca Lake.

Physicochemical parameters	St.	Minimum			Maximum			Average and standard error		
		A	B	C	A	B	C	A	B	C
Temperature (°C)	St.1	9	6.5	6.6	27.1	26.7	27.3	15.84 ± 1.8	15.4 ± 1.9	15.52 ± 1.95
	St.2	7.8	7.8	7.8	26.8	27.1	27.4	15.84 ± 1.87	15.85 ± 1.89	15.85 ± 1.90
	St.3	7.9	8.1	7.9	27.3	27.2	27.2	15.83 ± 1.95	15.88 ± 1.94	15.80 ± 1.92
	St.4	7.8	7.8	7.8	27.0	26.8	26.8	15.58 ± 1.93	15.5 ± 1.93	15.50 ± 1.94
pH	St.1	7.40	7.30	7.20	8.82	8.80	8.78	8.18 ± 0.1	8.23 ± 0.1	8.25 ± 0.1
	St.2	7.10	7.20	7.30	8.73	8.77	8.78	8.21 ± 0.1	8.26 ± 0.1	8.28 ± 0.1
	St.3	7.25	7.23	7.22	8.61	8.73	8.74	8.21 ± 0.1	8.24 ± 0.1	8.25 ± 0.1
	St.4	7.28	7.28	7.2	8.79	8.82	8.80	8.27 ± 0.1	8.27 ± 0.12	8.28 ± 0.12
Secchi Disc (m)	St.1	1.0	1.5	2.0	3.3	6.5	5.6	1.98 ± 0.18	3.95 ± 0.44	3.98 ± 0.37
	St.2	0.9	1.9	2.15	4.2	6.0	6.0	2.49 ± 0.32	3.59 ± 0.39	3.61 ± 0.37
	St.3	1.2	2.0	1.75	6.0	6.0	6.0	2.59 ± 0.36	3.71 ± 0.40	3.58 ± 0.39
	St.4	1.4	1.9	2.05	3.9	6.0	7.0	2.08 ± 0.19	3.93 ± 0.39	4.12 ± 0.47
Dissolved oxygen (mg l <sup>-1</sup> )	St.1	5.02	4.92	4.47	13.24	12.5	12.5	8.36 ± 0.68	8.68 ± 0.69	8.63 ± 0.73
	St.2	4.59	4.64	4.61	12.23	12.42	12.35	9.19 ± 0.57	9.19 ± 0.61	9.15 ± 0.62
	St.3	3.98	3.84	3.89	11.27	12.05	12.11	8.52 ± 0.67	8.59 ± 0.73	8.71 ± 0.74
	St.4	3.96	3.88	3.87	12.85	12.96	12.9	8.83 ± 0.78	8.59 ± 0.8	8.53 ± 0.79
Nitrate (µg l <sup>-1</sup> )	St.1	-	0.086	-	-	0.258	-	-	0.172 ± 0.03	-
	St.2	-	0.086	-	-	0.344	-	-	0.204 ± 0.05	-
	St.3	-	0.043	-	-	0.258	-	-	0.150 ± 0.04	-
	St.4	-	0.129	-	-	0.258	-	-	0.215 ± 0.03	-
Orthophosphate (µg l <sup>-1</sup> )	St.1	-	0.019	-	-	0.037	-	-	0.028 ± 0.003	-
	St.2	-	0.019	-	-	0.044	-	-	0.029 ± 0.005	-
	St.3	-	0.006	-	-	0.063	-	-	0.024 ± 0.01	-
	St.4	-	0.019	-	-	0.061	-	-	0.034 ± 0.009	-
Chlorophyll- <i>a</i> (mg/m <sup>3</sup> )	St.1	8.77	8.39	10.16	19.5	18.51	19.92	12.93±0.99	12.73 ± 0.94	15.20 ± 1.01
	St.2	10.29	12.18	9.61	26.16	21.59	17.62	16.08 ± 1.42	15.9 ± 0.95	13.97 ± 0.74
	St.3	8.39	7.97	10.22	20.63	21.09	21.79	13.5 ± 1.10	14.07 ± 0.99	14.54 ± 1.00
	St.4	10.06	10.77	10.20	18.86	18.29	18.29	14.06 ± 0.90	13.58 ± 0.74	13.55 ± 0.82

**Table 2. The presence of the taxa of the phytoplankton at the sampling stations.**

[illegible]

Table 2. (Cont'd.).

	Station 1			Station 2			Station 3			Station 4		
	A	B	C	A	B	C	A	B	C	A	B	C
<b>Chlorophyta</b>												
<i>Monaraphidium falcatus</i> (Corda) Ralfs	+	+	+	+	+	+	+	+	+	+	+	+
<i>Cosmarium formosulum</i> Hofmann	–	–	–	–	–	–	–	–	+	–	–	–
<i>Oocystis natans</i> (Lemm.) Wille	+	+	+	+	+	+	+	+	+	+	+	+
<i>Pediastrum dublex</i> Meyen	–	–	–	–	–	+	–	–	–	–	–	–
<i>Scenedesmus dimorphus</i> (Turp.) Kutz.	+	+	+	+	+	+	+	+	+	+	+	+
<i>Scenedesmus quadricauda</i> (Turp.) Breb.	+	+	+	+	+	+	+	+	+	+	+	+
<i>Tetraedron</i> sp.	–	–	–	+	+	+	–	+	–	–	+	+
<i>Chlorella</i> sp.	+	–	–	–	+	–	–	–	–	–	–	–
<i>Coelastrum</i> sp.	+	+	+	+	+	+	+	+	+	–	+	–
<i>Kirchneriella</i> sp.	+	+	+	+	+	+	+	+	+	+	+	+
<i>Mougeotia</i> sp.	+	+	+	+	+	+	+	+	+	+	+	+
<i>Phacotus lenticularis</i> (E.) Stein	+	+	+	–	+	+	–	–	–	–	–	–
<b>Chrysophyta</b>												
<i>Dinobryon</i> sp.	–	+	–	+	+	+	+	+	+	+	+	–
<b>Cryptophyta</b>												
<i>Cryptomonas ovata</i> Ehr.	–	–	+	–	–	+	–	–	+	+	+	+
<b>Cyanophyta</b>												
<i>Chroococcus limneticus</i> Lemm.	+	+	+	+	+	+	+	+	+	+	+	+
<i>Merismopedia glauca</i> (Ehr.) Kutz.	–	–	+	+	+	+	+	+	+	+	+	+
<i>Anabaena affinis</i> Lemm.	–	–	–	–	+	+	–	–	–	–	+	–
<i>Aphanizomenon ovalisporum</i> Forti.	–	–	–	–	+	+	+	+	+	+	+	+
<i>Planthorotrix rubescens</i> D.C.	+	+	+	+	+	+	+	+	+	+	+	–
<b>Euglenophyta</b>												
<i>Euglena gracilis</i> Klebs	–	–	–	+	–	–	+	–	+	+	+	–
<i>Phacus</i> sp.	–	+	+	+	–	–	–	–	+	–	+	+
<i>Trachelomonas hispida</i> (Perty) Stein	+	+	+	+	+	+	+	+	+	+	+	+
<b>Dinophyta</b>												
<i>Ceratium hirundinella</i> (Mueller) Schrank	–	–	–	–	–	–	–	–	–	–	–	+
<i>Peridinium bipes</i> Stein	–	+	–	+	+	+	+	–	+	+	+	+

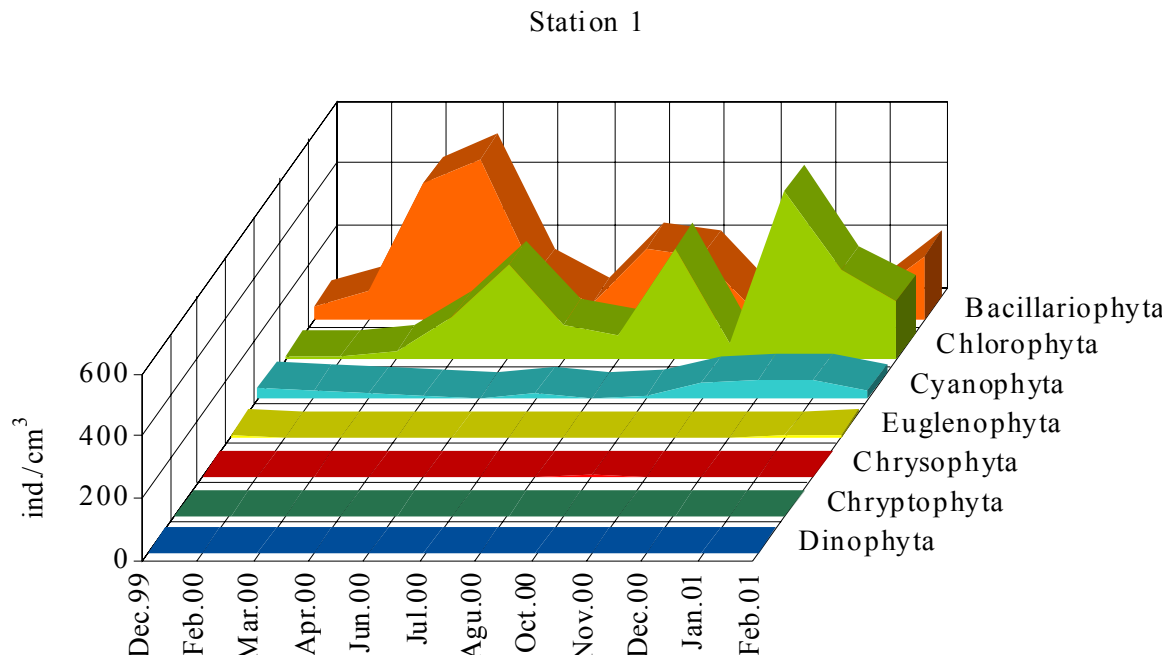


Fig. 2a. The seasonal changes of density of phytoplankton groups of Lake Sapanca at station 1.

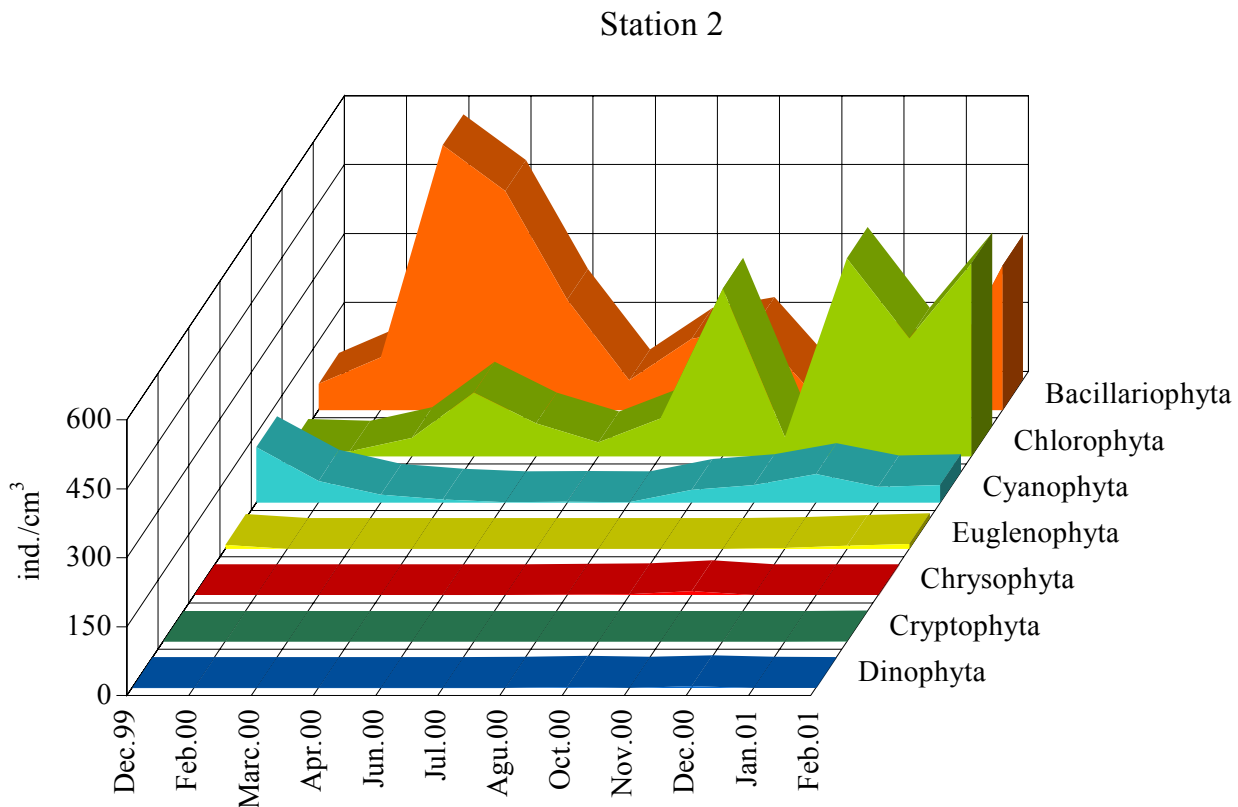


Fig. 2b. The seasonal changes of density of phytoplankton groups of Lake Sapanca at station 2.

Chrysophyta division was represented by *Dinobryon* sp. and Cryptophyta division was represented by *Cryptomonas ovata* Ehrenberg. Dinophyta division was represented by *Ceratium hirundinella* (Mueller) Schrank and *Peridinium bipes* Stein. During the present study *Dinobryon* sp., the *C. ovata*, the *C. hirundinella* and the *Peridinium bipes* Stein were recorded always in low numbers and scarcely. Euglenophyta division was represented by 3 taxa. It was determined that *Trachelomonas hispida* (Perty) Stein was found more frequently than *Euglena gracilis* Klebs and *Phacus* sp.

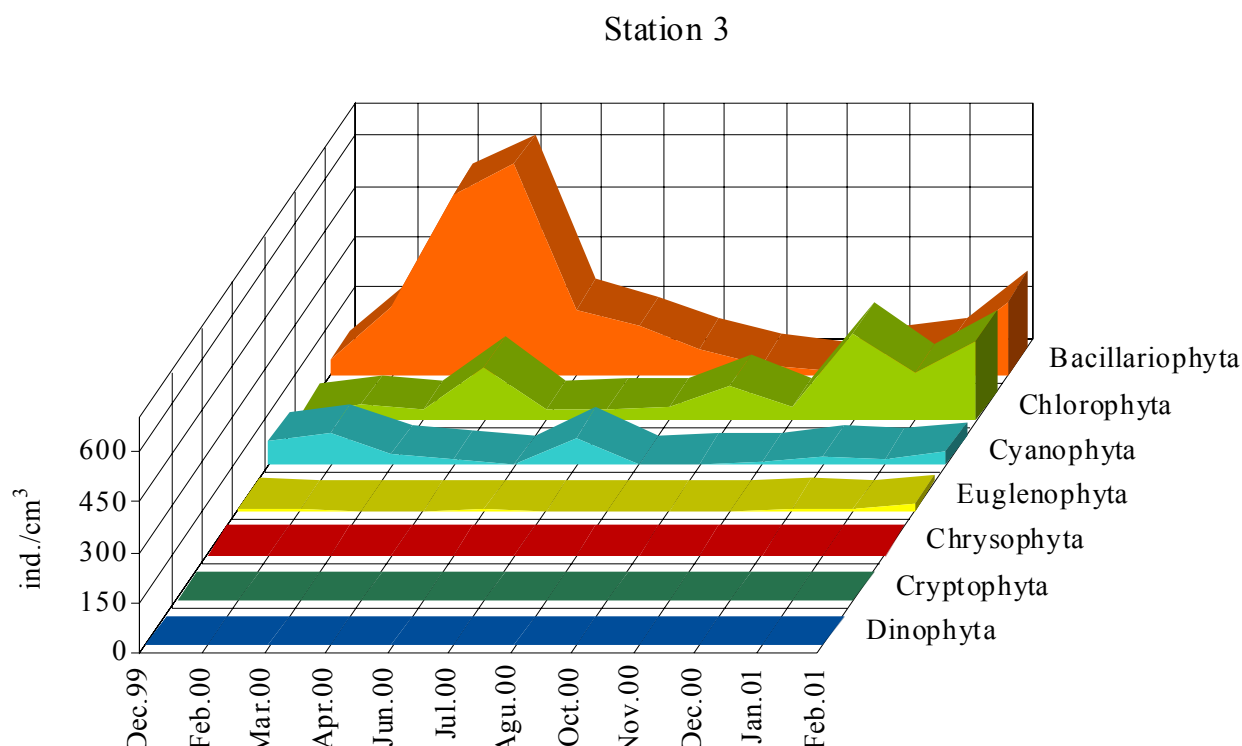


Fig. 2c. The seasonal changes of density of phytoplankton groups of Lake Sapanca at station 3.

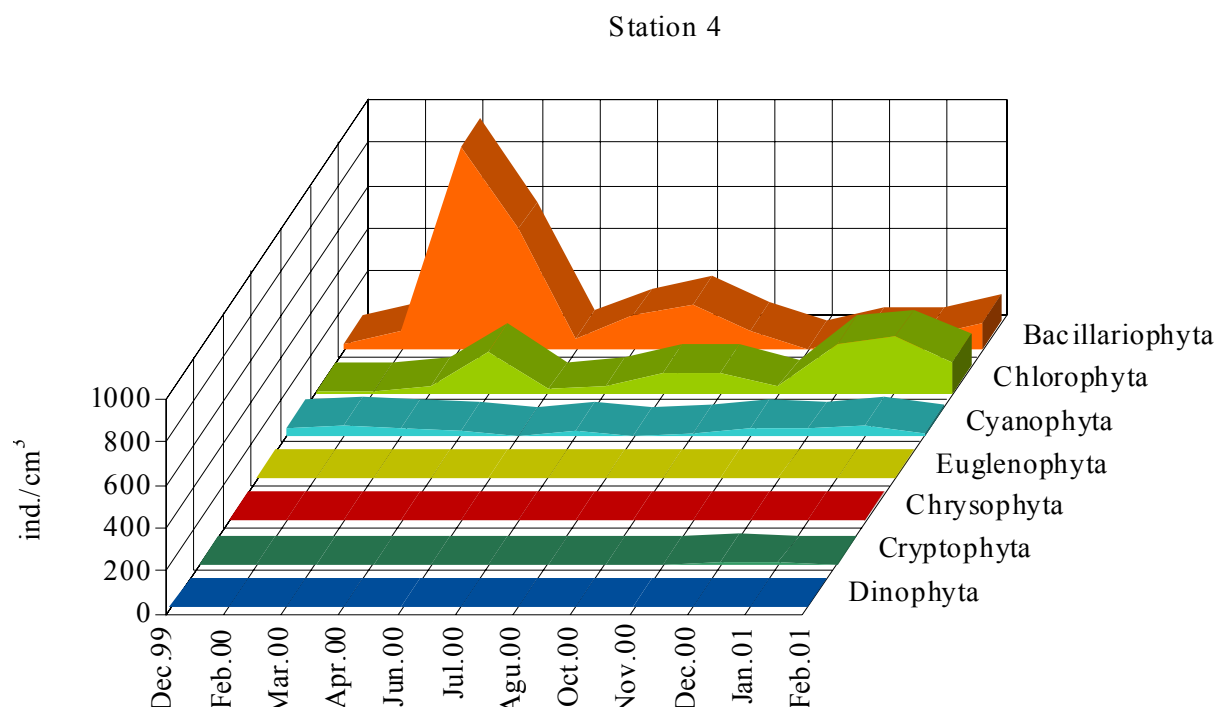


Fig. 2d. The seasonal changes of density of phytoplankton groups of Lake Sapanca at station 4.

Chlorophyll- *a* contents among the sampling stations ranged between 7.97 mg/m<sup>3</sup>- 21.59 mg/m<sup>3</sup> on the surface. The minimum content was measured in 3-B sampling point in March 2000 and the maximum content in 2-B sampling point in April 2000.

## Discussion

Yiğit *et al.*, (1984) noted phosphate concentrations between 0.5-0.74 µg l<sup>-1</sup>. Tuğrul & Morkoç (1991) noted phosphate concentrations being under 2 µg l<sup>-1</sup>. Temel (1991)



recorded 1-12  $\mu\text{g l}^{-1}$  and Aykulu *et al.*, (2006) measured orthophosphate concentrations between 1.8- 20.9  $\mu\text{g l}^{-1}$  on the surface waters of Sapanca Lake. Tuğrul & Morkoç (1991) measured nitrate concentrations 2  $\mu\text{g l}^{-1}$  between the surface and 25 m. Yiğit *et al.*, (1984) couldn't record nitrate concentrations. Average of Secchi disc depth was 4.88 m in Temel (1991)'s work and 2.95 m in Aykulu *et al.*, (2006)'s study.

Productivity level of lakes could be designated basically by chlorophyll-*a* density, Secchi disc depth and phosphate content. The average of orthophosphate was 0.028  $\text{mg l}^{-1}$ , chlorophyll- *a* 14.1  $\text{mg/m}^3$  and Secchi disc depth 3.3 m . According to data obtained from the present study, in respect of orthophosphate, chlorophyll-*a* and Secchi disc depth Sapanca Lake indicates mesotrophic character.

The composition of phytoplankton in designated water mass shows there is a trophic structure. Changes of phytoplankton compositions usually indicate there is a result of nutrient increases (Reynolds, 1998). Like earlier studies, groups which consisted the phytoplankton were same in the present study. Changes in the percentage contribution to the total phytoplankton have occurred. The percentage contribution of the Bacillariophyta group was decreased. In earlier quantitative studies the taxa number was recorded 138 in Temel (1991) and 54 in Aykulu *et al.*, (1999). Additionally in earlier limnological works (Artüz, 1983; Worthmann, 1985) members of the Bacillariophyta group consisted 97% and 84% of total phytoplankton. In first quantitative works the percentage was designated 66% and 49%, in present work it was 55% of the total phytoplankton. Members of Chlorophyta were consisted 56% in Temel (1991), 22% in Aykulu *et al.*, (1999; 2006) and in these study 22.2% of the total phytoplankton. The percentage contribution to the total phytoplankton, Cyanophyta were found 9.4% in Temel (1991), 13% in Aykulu *et al.*, (1999, 2006) and in these study 10% of total phytoplankton.

Members of the Bacillariophyta group were found to be mostly dominant on the surface when it came to number of type and number of individual. It was seen that generally in algological studies of Turkish freshwaters the Bacillariophyta division was the dominant division. (Altuner, 1984; Temel, 1991; Altuner & Gürbüz, 1994; Elmacı & Obalı, 1998; Gürbüz & Altuner, 2000; Gürbüz & Kıvrak, 2004). In the present study, the dominant species of the Bacillariophyta division the *Asterionella formosa* is usually an indicator species of eutrophic structure. It has been stated that the taxa can be found in high numbers in mesotrophic and eutrophic and even in oligotrophic waters (Patrick & Reimer, 1966; Rawson, 1956). *A. formosa* was stated as being phytoplankton characteristic and nutritionally rich in warm lakes in spring and when of high number has known to be the reason of the lessening in matter of dissolved nitrate and phosphate like nutrients in the water (Lund, 1950). In earlier studies (Temel, 1991; Aykulu *et al.*, 2006) very low numbers of *A. formosa* was recorded occasionally at the shore. It was an important difference between earlier studies and the present study.

The *Cyclotella atomus* Hustedt and the *C. ocellata* of Centrales order were present in every season. *Cyclotella* species were accepted as one of the typical components both of oligotrophic lakes and reservoirs by many investigators. (Hutchinson, 1967; Trifinova, 1998). The *C. ocellata* occurred as a centric diatom which was commonly dominant and frequently in both of Temel (1991)'s and Aykulu *et al.*, (1999; 2006)'s works. *Aulocoseira italica* var. *tenuissima* (Grunow) Simonsen was the second dominant species at certain times.

It was stated that the members of pennales order occurred significantly on the phytoplankton in small shallow lakes and ponds (Taş & Gönülol, 2007). The presence on phytoplankton of the pennales order members of benthic character was based on wave

motion and exposed to wind of the lake. This situation was observed in Mogan Lake, Palandöken Lake and Çakmak Dam Lake (Obalı, 1984; Gürbüz & Altuner, 2000; Ersanlı, 2006). *S. acus* was noted occasionally dominant, *C. ocellata*, *S. acus* and *S. ulna* were specified continuously presented taxa and generally *Cyclotella* and *Synedra* species were dominant in different periods by Aykulu *et al.*, (1999). *S. ulna* has been stated an characteristic of eutrophic lakes (Cirik & Cirik, 1991). But these species was recorded dominant in oligotrophic Hafik Lake and Derbent Dam Lake (Kılınç & Sıvacı, 2001; Taş & Gönülol, 2007).

Chlorophyta members were usually found commonly and abundantly in mesotrophic and eutrophic lakes (Trifonova, 1998). Round (1984) explained that some of Chlorococcales members were found mostly in lakes which were heading towards from oligotrophic period to eutrophic period. *Scenedesmus*, *Oocystis* and *Pediastrum* species were found abundantly in eutrophic lakes and oligomesotrophic reservuars in Turkey (Obalı, 1984; Taş *et al.*, 2002). Chlorococcales order members were found rich in respect of species number and density in Beytepe and Alaplı lakes. Furthermore *Pediastrum* and *Scenedesmus* species were accepted eutrophic Chlorococcales in Beytepe pond (Ünal, 1984).

The *P. rubescens* was found abundantly which was the cause of discolouration of surface water in 1995-1996 and in May 1997. Both in Aykulu *et al.*, (1999; 2006) and in present study it wasn't recorded in high densities of to change the colour of the surface water. In Aykulu *et al.*, (1999; 2006) high individual numbers of *P. rubescens* was recorded in surface and in deep waters in June and especially in November 1997. In the present study *P. rubescens* was recorded in highest numbers in April 2000. This indicates that *P. rubescens* doesn't prefer warm waters (Dokulil *et al.*, 2000). It was stated that Cyanobacteria become important in temperate climate lakes especially in shallow eutrophic lakes (Padisak & Reynolds, 1998) and form water-blooms in late summer and early autumn in mesotrophic and eutrophic lakes (Rawson, 1956; Trifonova, 1998).

Phytoplankton of Sapanca Lake is a phytoplankton type which dominates by centric and pennate diatoms, *Planktothrix rubescens* and members of Chlorococcales order. No apparent differencies of phytoplankton composition were found between littoral and pelagic sampling points. Occasionally there were differencies in phytoplankton densities in pelagic sampling points.

In earlier studies maximum chlorophyll-*a* was found 2 mg/m<sup>3</sup> by Temel (1991), 4 mg/m<sup>3</sup> by Tüfekçi (1999) and 2.31 µg l<sup>-1</sup> by Aykulu *et al.*, (2006). In the present study chlorophyll-*a* contents were higher than the earlier studies. Generally the phytoplankton were poor and high values of chlorophyll-*a* were measured occasionally on the littoral region.

Numan (1958) and Temel (1991) described the Lake Sapanca as oligotrophic, whereas Aykulu *et al.*, (1999; 2006) reported that it was changing from oligotrophic to mesotrophic. The present study also confirms the latter study that the lakes in mesotrophic character.

## Acknowledgement

I am very grateful to Prof. Dr. Mustafa Temel for his help to revise the manuscript and Adnan Sümer, Technician at the Freshwater Research and Fish Breeding Unit (Sapanca) of the Faculty of Fisheries for his help at sampling.

## References

- Artüz, İ. 1983. Sapanca Gölü'nde ve Çevresinde Yapılan Çalışmalar, İ.Ü. Rektörlüğü Balık Üretme ve Islah İstasyonu, Sapanca Sempozyumu.
- Altuner, Z. 1984. Tortum Gölü'nden bir istasyondan alınan fitoplanktonun kalitatif ve kantitatif olarak incelenmesi, *Doğa Bilim Dergisi*, 8 (2):162-181.
- Altuner, Z and H. Gürbüz. 1994.. Tercan Baraj Gölü fitoplankton topluluğu üzerine bir araştırma, *Turkish Journal of Botany*, 18: 443-450.
- Aykulu, G., M. Albay, H. Tüfekçi, R. Akçaalan and M. Karabatak. 1999.. Sapanca Gölü'nde Fitoplankton ve Zooplankton Tür Kompozisyonu ve Su Kalitesi ile İlişkileri, İ.Ü. Araştırma Fonu Proje Geliştirme Sonuç Raporu.
- Aykulu, G., M. Albay, R. Akçaalan, H. Tüfekçi and Y. Aktan. 2006. Species composition, abundance and seasonality of phytoplankton in a moderately deep Turkish Lake, *Nova Hedwigia*, Beiheft, 130: 325- 338.
- Cirik, S. and Cirik, Ş. 1991. *Limnoloji*, Ege Üniversitesi Su Ürünleri Fakültesi Yayınları, No: 21, ISBN 975-483-103-3.
- Dokulil, M.T. and K. Teabner. 2000.. Cyanobacterial Dominance in Lakes, *Hydrobiologia*, 438: Part 1. Special Issue.
- DSİ. 1984. Sapanca Gölü Kirlilik Araştırması, İçme suyu ve Kanalizasyon Dairesi Başkanlığı, Ankara.
- DSİ. 1989. Su kalitesi Gözlem ve Denetimi Semineri, İçme suyu ve Kanalizasyon Dairesi Başkanlığı, Ankara.
- Elmacı, A and O. Obalı. 1998. Akşehir Gölü Kıyı Bölgesi Alg Florası, *Turkish Journal of Biology*, 22: 81-98.
- Ersanlı, E. 2006. Çakmak Barajı (Tekkeköy- Samsun) fitoplanktonu üzerine bir araştırma, *Doktora Tezi*, Danışman Arif Gönüloğlu, Ondokuz Mayıs Üniversitesi Fen Bilimleri Enstitüsü.
- Gönüloğlu, A. and O. Obalı. 1998. Hasan Uğurlu Baraj Gölü (Samsun-Türkiye) fitoplanktonu üzerinde bir araştırma, *Turkish Journal of Biology*, 22: 447- 461.
- Gürbüz, H. and Z. Altuner. 2000. Palandöken (Tekederesi) Göleti fitoplankton topluluğu üzerinde kalitatif ve kantitatif bir araştırma, *Turkish Journal of Biology*, 24: 13-30.
- Gürbüz, H. and E. Kıvrak. 2004. Erzurum, 23 Temmuz Göleti fitoplankton topluluğunun kompozisyonu, yoğunluğu ve mevsimsel değişimi, *İstanbul Üniversitesi Su Ürünleri Dergisi*, 17: 19-35.
- Huber-Pestalozzi, G. 1975. *Das Phytoplankton Des Süßwassers*, Teil:2 Diatomeen. Band XVI. Stuttgart.
- Hustedt, F. 1930. *Bacillariophyta (Diatomeae)* Heft. 10. In Pascher, Die Süßwasser-flora Mitteleuropas. Gustav Fischer Pub. Jena. Pb. 466. Germany.
- Hustedt, F. 1985. *The Pennate Diatoms*. Koeltz Scientific Books Koenigstein. ISBN 3-87429-246-0.
- Hutchinson, G.E. 1967. *A treatise on limnology vol:II. Introduction to lake biology and the limnoplankton*, John Wiley and Sons. Inc., Newyork, London, Sydney, 115 p.
- Kılınç, S. and E.R. Sıvacı. 2001. İki alkalik gölün geçmiş ve şimdiki diyatome floraları üzerine bir çalışma, *Turkish Journal of Botany*, 25: 373-378.
- Krammer, K. and H. Lange-Bertalot. 1986. *Bacillariophyceae*, 3. Teil. Centrales. Band 2/3.
- Numann, W. 1958. Anadolu'nun Muhtelif Göllerinde Limnolojik ve Balıkçılık İlmi Bakımından Araştırmalar ve Bu Göllerde Yaşayan Sazanlar Hakkında Özel Bir Etüd, İ.Ü. Fen Fak. Hidrobiyoloji Araştırma Enstitüsü Yayınlarından Monografi, sayı: 7, İstanbul.
- Lund, W.G. 1950. Studies on *Asterionella formosa* Hass. II. Nutrient depletion and the spring maximum, *Journal of Ecology*, 38: 1-35.
- Lund, W.G., C. Kipling and E.D. Le Cren. 1958. The Inverted Microscope Method of Estimating Algal Numbers and the Statistical Basis of Estimations by Counting, *Hidrobiologia*, 11: 143-170.

- Obalı, O. 1984. Mogan Gölü fitoplanktonunun mevsimsel değişimi, *Doğa Bilim Dergisi*, 8(1): 91-104.
- Padisak, J. and C.S. Reynolds. 1998. Selection of phytoplankton associations in Lake Balatona, Hungary, in response to eutrophication and restoration measures, with special reference to the cyanobacteria, *Hydrobiologia*, 384: 41-53.
- Parsons, T.R. and J.D.H. Strickland. 1963. Discussion of Spectrophotometric Determination of Marine Plant Pigments, with Revised Equations for Ascertaining Chlorophylls and Carotenoids, *Journal of Marine Research*, 21(3): 115-163.
- Patrick, R. and C.W. Reimer. 1966. *The Diatoms of the United States*, Vol.1, The Academy of Natural Sciences of Philadelphia.
- Patrick, R. and C.W. Reimer. 1975. *The Diatoms of the United States*, Vol.2, Part 1, The Academy of Natural Sciences of Philadelphia.
- Prescott, G.W. 1961. Algae of Western Great Lake Area, Brown Comp. Prob. Dubuque, Iowa, ISBN 0-697-04522-8.
- Prescott, G.W. 1964. *The Freshwater Algae*, W.M.C. Brown Comp. Pub. 135, South Locust Street. Dubuque, Iowa, 52003-272.
- Rawson, D.S. 1956. Algal indicators of lake types, *Limnology and Oceanology*, 4, 1(1): 18-25, 386-398.
- Reynolds, C.S. 1998. What Factors Influence The Species Composition Of Phytoplankton In Lakes Of Different Trophic Status? *Hydrobiologia*, 369/370. p.11-26.
- Reynolds, C.S., V.L. Huszar, L. Naselli-Flores and S. Melo. 2002. Towards a functional classification of the freshwater phytoplankton, *Journal of Phytoplankton Research*, 24: 417-428.
- Round, F.E. 1984. *The ecology of the algae*, Cambridge University Press., Cambridge, p. 653.
- Taş, B., A. Gönülol and E. Taş. 2002. A study on the seasonal variation of the phytoplankton of Lake Cenek (Samsun-Turkey), *Turkish Journal of Fisheries and Aquatic Sciences*, 2: 121-128.
- Taş, B. and A. Gönülol. 2007. Derbent Baraj Gölü (Samsun, Türkiye) planktonik algleri, *Journal of Fisheries Sciences.com*, 1(3): 111-123.
- Temel, M. 1991. Sapanca Gölü'nde Fitoplankton Biyomasi ve Bunu Etkileyen Fiziksel ve Kimyasal Faktörlerin İncelenmesi, *Doktora Tezi*, Danışman Güler Aykulu, İ.Ü. Fen Bilimleri Enstitüsü.
- Trifonova, I.S. 1998. Phytoplankton composition and biomass structure in relation to trophic gradient in some temperate and subarctic lakes of North-western Russia and the Prebaltic, *Hydrobiologia*, 369-370: 99-108.
- Tüfekçi, H. 1999. Sapanca Gölü'nde Fitoplankton Biyomasının ve Birincil Verimliliğinin Dağılışı ve Mevsimsel Değişimleri, *Doktora Tezi*, Danışman Güler Aykulu, İ.Ü. Fen Bilimleri Enstitüsü.
- Tuğrul, S., E. Morkoç and S. Çikoğlu. 1989. Determination of Limnological Characteristics of the Sapanca Lake. First Technical Report, July-September 1989 period, Tubitak Chemical Engineering Research Department, Publ. No: 234, Gebze.
- Ünal, Ş. 1984. Beytepe ve Alap Göletleri'nin fitoplanktonunun mevsimsel değişimi, *Doğa Bilim Dergisi*, 8(1): 121-137.
- Worthmann, H., E. Sarıca, A. Hosanoğlu, N. Yücetaş and M. Winter. 1985. Sapanca Gölü'nün Balıkçılık Açısından Durumu ve Veriminin Arttırılması İçin Öneriler, İ.Ü. Rektörlüğü Su Ürünleri Yüksekokulu, Sapanca Balık Üretim ve Islah İstasyonu, Yayın No: 14, Sapanca.
- Yiğit, V., N. Müftügil, N. Özalp, C. Ergen, H. Arvas, and H. Yolcular. 1984. A Study on Nutrient Condition and Water Pollution in Sapanca Lake, Technics Report, TUBITAK-MBEAE, Department of Nourishment.
- Yücetaş, N. 1975. Sapanca Gölü'nde Fitoplanktonun Yıllık Tezahürleri ve Yayılışları, *Tubitak. V. Bilim Kongresi*. Vet. ve Hayv. Araş. Gr. Tebliğ Özetleri, 29 Eylül – 2 Ekim 1975, Ankara.