

CLONING AND PROKARYOTIC EXPRESSION OF A COMPLEMENTARY DNA GENE FOR CYCLOPHILIN FROM *CAMELLIA OLEIFERA*

XIAOFENG TAN^{1*}, BAOMING WANG¹, LIN ZHANG¹, MINGWANG SHI^{1, 2},
LUSHAN XIE¹ AND FANGMING HU¹

¹The Key Lab. of Non-wood Forest Products of State Forestry Administration,
Central South University of Forestry and Technology, Changsha, 410004, P. R. China

²Henan Institute of Science and Technology, Xinxiang, 453003, P. R. China

*Corresponding author Email: tanxiaofengcn@126.com; Tel: +86 731-5623416

Abstract

Cyclophilins (CyPs) are ubiquitous proteins and involved in protein folding and stress response due to peptidyl-prolyl *cis-trans* isomerase (PPIase) activity. In this study, a 975-base pair (bp) full-length complementary DNA (cDNA) gene, *Camellia oleifera* CyP (CoCyP, GenBank access no. FJ377540), was isolated from the conducted cDNA library of *C. oleifera* seeds. This cDNA encodes a polypeptide of 207 amino acids, which has an endoplasmic- reticulum-localized signal sequence at its N-terminus, but not the typical signal sequence at its C-terminus. Moreover, its putative amino acid sequence shares highest identity with those of *Arabidopsis thaliana* CyPB (84%) and *Triticum aestivum* CyPB (81%), and possesses a highly conserved central core domain including cyclosporin A (CsA)-binding sites, the tetrapeptide Ala-Ala-Pro-Ala-binding sites, residues required for PPIase catalysis and an insertion of seven amino acids of unknown function. Collectively, it is suggested that the CoCyP protein belongs to CyPB and has PPIase activity. An approximately 21 kDa protein was expressed via the recombinant pET-30b(+)/CoCyP in *Escherichia coli*. In this study, we tentatively put forward to the hypothesis that the gene expressing during the peak of seed lipid biosynthesis, might correlate with the caused harmful products in the lipid biosynthesis process, and protect cells against reactive oxygen species (ROS) damage; thus it may be crucial during lipid biosynthesis and stress responsiveness.

Introduction

As one of the most important edible oil trees in China, tea-oil tree (*Camellia oleifera*) is planted in the large areas due to its strong adaptability. Tea-oil is a kind of excellent vegetable oil with the higher edible and medicinal value, and enriches unsaturated acid, such as oleic acid and linoleic acid (Zhuang, 2008). To reveal the mechanism of lipid biosynthesis is increasingly becoming a current crucial issue. One of solving strategies is to gain better understanding of the related lipid biosynthesis genes including enzymes with PPIase activity and molecular chaperones, which assist in the folding and maturation of proteins and the deposition of lipid storage compounds (Galili *et al.*, 1998). CyPs are a conserved class of proteins that bind the immunosuppressive drug CsA (Handschumacher *et al.*, 1984). They belong to the cluster of immunophilins that possess PPIase activity, the rate-limiting step in protein folding (Brandts *et al.*, 1975). They are ubiquitous proteins present in all subcompartments (Galat, 1999), and play significant roles in a wide variety of processes including cellular metabolism (Shieh *et al.*, 1989), transcription regulation (Ryczynand & Clevenger, 2002) and cellular signaling (Brazin *et al.*, 2002). CyPB, one class of cyclophilin family, accumulates both in the endoplasmic reticulum (ER) and in complexes on the plasma membrane (Price *et al.*, 1994; Wu *et al.*, 2009). It possesses a signal sequence at the N-terminus, which targets the storage protein to the

lumen of ER, followed by protein folding in it (Wu *et al.*, 2009). Plant CyPs have been isolated and identified from a number of plants, e.g., tomato, maize and *Brassica napus* (Gasser *et al.*, 1990), and *A. thaliana* (Romano *et al.*, 2004). They also are involved in the biotic and abiotic stress responses besides the roles mentioned above and may be to act as chaperon-like proteins to facilitate the folding of the stress-related proteins or to protect these proteins from proteolytic degradation or aggregation (Godoy *et al.*, 2000; Chen *et al.*, 2007; Wang & Tan, 2008). Researches have focused on the roles of CyPs involved in protein folding as PPIase activity in *T. aestivum* (Wu *et al.*, 2009), *Ricinus communis* (Gottschalk *et al.*, 2008); nevertheless, further studies are still necessary due to little attention paying to lipid synthesis.

In spite of such important potential roles of CyPs. To date, no CyP genes have been cloned and expressed from *C. oleifera*. As an initial step toward understanding the roles of CyP in the pathway of the lipid biosynthesis and stress response, this study describes the isolation, identification and prokaryotic expression of the *CoCyP* gene, and aims to explore its roles in the processes of lipid biosynthesis, stress response and seed protein synthesis (Tan *et al.*, 2006).

Materials and Methods

Materials: The cDNA library of *C. oleifera* seeds, *E. coli* stain BL21 (DE3) and the expression vector pET-30b (+) were stored in our laboratory. Gel Extraction Kit was bought from Ambigen Life Science Technology Co. Ltd. *Taq* DNA polymerase (TaKaRa), *Nde*I, *Eco*RI, T4 DNA ligase, isopropylthio- β -D-galactoside (IPTG), Sodium dodecyl sulfate (SDS) and other chemicals were of reagent grades or the highest purity commercially available.

Cloning identifying and sequencing cDNA of CyP gene: The MonoClone (rzots0_000167.y1.scf) from the *C. oleifera* cDNA library was chosen and incubated in Luia broth (LB) agar plate containing containing 50 μ g/ml ampicillin, and then grown in LB medium containing 50 μ g/ml ampicillin overnight at 37°C. Plasmid DNA was prepared by SDS-alkaline lysis (Miniprep) (Sambrook *et al.*, 1999). The polymerase chain reaction (PCR) was performed with vector-based primers T3 (5'-ATTAACCCTCACTACCCG GGA-3') and T7 (5'-GCGTAATACGA CTCACTATA-3') in a 20 μ L reaction containing 1 \times PCR buffer, 0.5 mM dNTPs, 1.5 mM MgCl₂, 0.5mM of each primer, 1U *Taq* polymerase and 10 ng DNA template. Cycling conditions consist of precycling at 94°C for 5 min, and then 35 cycles of denaturation at 94°C for 30 s, annealing at 56°C for 45 s and elongation at 72°C for 1 min 30 s, and final extension at 72°C for 7 min. The PCR product was analyzed by 1.5% (w/v) agarose gel. DNA sequencing was performed by Shanghai Boshang biotechnology Co. Ltd (data not shown).

Analysis of sequence data: Database searches and the protein analysis (including molecular weight and signal sequence prediction) were performed with the NCBI server (<http://www.ncbi.nlm.nih.gov>), the ProtParam tool (<http://www.expasy.ch/tools/protparam.html>) and the SignalP 3.0 server (<http://www.cbs.dtu.dk/services/SignalP/>). Subcellular location and predicted scores were conducted using the TargetP service (<http://www.cbs.dtu.dk/services/TargetP/>). Multiple sequence alignment was carried out by Vector NTI 10.0, and displayed by GeneDoc.

Plasmid construction and expression: The coding region of *CoCyP* was prepared by PCR using the cDNA product as template. The forward primer was chosen as 5'-

CGGCATATGGCCAGAACTCGATCG-3' and reverse primer as 5'-CGGGAATTCTT-ACAAAGGAAGTTCGCC-3'. The two primers harbored a recognition site for *Nde*I (underlined) and *E. co*RI (underlined), respectively. The reaction volume and cycling were as described above. After purification according to Gel Extraction Kit (Ambiogen), the PCR product was digested with *Nde*I and *E. co*RI, and ligated into the pET-30b (+) at the corresponding restriction sites. The mixture was transformed into the *E. coli* BL21 (DE3) strain and the new recombinant with *CoCyP* gene in the pET-30b (+) (referred to as pET-30b (+)/*CoCyP*) were verified by DNA sequencing (data not shown) and the PCR amplification. The nine recombinants chosen randomly were performed PCR, and the reaction volume, conditions and primers were as the preparation of the coding region of *CoCyP* described. Transformed cells were grown in LB medium containing 100 µg/ml kanamycin to an OD₆₀₀ of 0.6 at 37°C; IPTG was added to a final concentration of 1 mM and the incubation was continued for an additional 4 h. After centrifugation, the pellet was resuspended in 20µL sterilized H₂O, and added to equal volume 2×SDS gel-loading buffer, and then heated it to 100°C for 10 minutes. The suspension was analyzed on 15% denaturing polyacrylamide gel (Sambrook *et al.*, 1999).

Results

Cloning and identifying of *C. oleifera* cyclophilin gene: PCR amplification of the MonoClone (rzots0_000167.y1.scf) with T3 and T7 primers led to a product of size approximately 1100 bp (Fig. 1). After the 110 bp vector sequence being subtracted, an about 1000 bp cDNA fragment was acquired. It shares the high identity (96%) with *Camellia sinensis* CyP in the nucleotide level, and the high degree of identity in the amino acid level with plant CyPs from GenBank data, thus we proposed that the clone might be a full-length cDNA. After DNA sequencing, the 975-bp full-length cDNA gene of CyP was determined, and designated as *CoCyP* (GenBank access no. FJ377540). It contains a 621-bp (35-655) opening reading frame (ORF) encoding a polypeptide of 207 amino acids, 34 bp 5'- untranslated region (5' UTR) and a 317 bp of 3'-untranslated region (3' UTR) with polyadenylation. Behind the terminated code, there is a polyadenylation signal AATAAA (752-757) (Fig. 2). Within the sequence of the *CoCyP* cDNA, the 3'UTR is (A+T)-rich (67%, not contained polyadenylation), and 5UTR' is much less (A+T)-rich (52.94%); there are no distinct differences between the UTRs and the coding region (52.08%).

Analysis of the deduced *CoCyP* amino acid sequence: The prediction results of the ProtParam tool and the SignalP 3.0 server showed that the *CoCyP* polypeptide molecular weight was 22.24 kDa. The protein has a signal sequence (Residues 1-26) including six Leu residues (Leu 9, Leu 11, Leu 15, Leu 17, Leu 21 and Leu 25). The putative cleavage site of the signal sequence of the *CoCyP* protein is suggested between Ala26 and Lys27, identical to that for the *Arabidopsis* ER-localized CyP5 (containing a potential cleavage site between the signal peptide Ala23 and Lys24) (Price, *et al.*, 1991; Saito *et al.*, 1999). The result of Subcellular location using the TargetP service indicated that the *CoCyP* protein was a secretory pathway protein, similar to those of *A. thaliana* (NP_180557), potato (ABB86261) and tomato (AAW22880); and their obtained scores were 0.960, 0.981, 0.984 and 0.978, respectively. The results support the point that a potentially significant feature of the N-terminal signal peptides of the predicted secretory pathway (SP) CyPs is the presence of Leu-rich residues (Price *et al.*, 1994; Romano *et al.*, 2004).

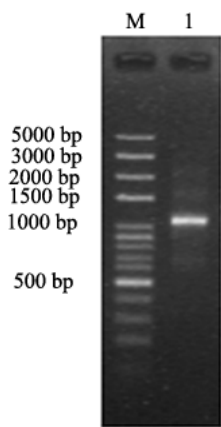


Fig. 1. The PCR result of the cDNA clone
M: 100 bp plus DNA ladder; 1: the MonoClone rzots0_000167.y1.scf

1	CGAAACCAAA	AGGGTGTGTC	GAAAACCAGA	GACAATG	CCC	AGAACTCGAT	CGTTCTCACT	60
	5' UTR				M A	R T R	S F S L	(9)
60	CGCACTGGTG	TGGACGCTAG	TCCTCTTCGC	AACCCTAGCT	CTCACTCAGG	CGAAGAAATC		120
(10)	A L V	W T L	V L F A	T L A	L T Q	A K K S		(29)
121	GAAGGAGGAT	TTAAAGGAAG	TGACTCACAA	AGTTTACTTT	GATGTCGAGA	TTGCCGGA		180
(30)	K E D	L K E	V T H K	V Y F	D V E	I A G K		(49)
181	ACCTGCTGGT	CGTATTGTCA	TGGGTCCTCT	TGGGAAGGCA	GTTCTCTAAA	CAGCAGAGAA		240
(50)	P A G	R I V	M G L F	G K A	V P K	T A E N		(69)
241	TTTCCGAGCA	CTGTGCACAG	GGGAGAAAGG	TGTTGGAAG	AGTGGGAAAC	CTCTTCACTA		300
(70)	F R A	L C T	G E K G	V G K	S G K	P L H Y		(89)
301	CAAGGGGAGC	AAATTCCTATA	GAATTATTCC	CAGCTTTATG	CTCCAGGGAG	GTGATTTTAC		360
(90)	K G S	K F H	R I I P	S F M	L Q G	G D F T		(109)
361	ACTTGGTGAT	GGACGAGGTG	GAGAATCAAT	TTATGGGGGG	GAGTTTGCTG	ATGAGAATTT		420
(110)	L G D	G R G	G E S I	Y G G	E F A	D E N F		(129)
421	CAAGCTGAAG	CACACTGGCC	CAGGGCTTCT	TTCAATGGCA	AATGCTGGCC	CAGACACAAA		480
(130)	K L K	H T G	P G L L	S M A	N A G	P D T N		(149)
481	TGGCTCACAG	TTCTTCATTA	CAACTGTCAC	AAGTAGCTGG	TTGGATGGCC	GACATGTGGT		540
(150)	G S Q	F F I	T T V T	T S W	L D G	R H V V		(169)
541	GTTTGGAAAG	GTGCTATCGG	GCATGGATGT	GGTTTACAAG	ATTGAAGCTG	AAGGCAATCA		600
(170)	F G K	V L S	G M D V	V Y K	I E A	E G N Q		(189)
601	GAGTGGCACT	CCCAAGAGCA	ATGTTCAAAT	TGCTGACAGC	GGCGAACTTC	CTTTG	TAA	660
(190)	S G T	P K S	N V Q I	A D S	G E L	P L	*	
661	TTCTTGTTTG	ATTATTTCTC	ATCAATGGCA	GCTGTTTTCG	TTCTCTTTTG	TCTGAGAATG		720
721	ATCTCATTTAA	GCTAGCTTAG	TTTGTTGAAT	CAATAAA	CCC	CCTAGATTAA	GGTGGTATTT	780
					3' UTR			
781	TTCTGCATCA	ACCTTGATCA	TTAGGATATT	CCTCTATTC	AGACTTTTTC	AAGTAATTAA		840
841	ATCTTATTTA	AAAAAAAAAA	AAAAAAAAAA	AAAAAAAAAA	AAAAAAAAAA	AAAAAAAAAA		900
901	AAAAAAAAAA	AAAAAAAAAA	AAAAAAAAAA	AAAAAAAAAA	AAAAAAAAAA	AAAAAAAAAA		960
961	AAAAAAAAAA	AAAAA						

Fig. 2. The nucleotide sequence and the deduced amino acid sequence of the full-length CyP cDNA of *C. oleifera*.
The initiated nucleotide sequences, the translational termination codon and the polyadenylation signal are boxed .The 5'-untranslated region and the 3'- untranslated region are underlined. The waving line indicates polyadenylation, and the stop codon is indicated by asterisk (*).

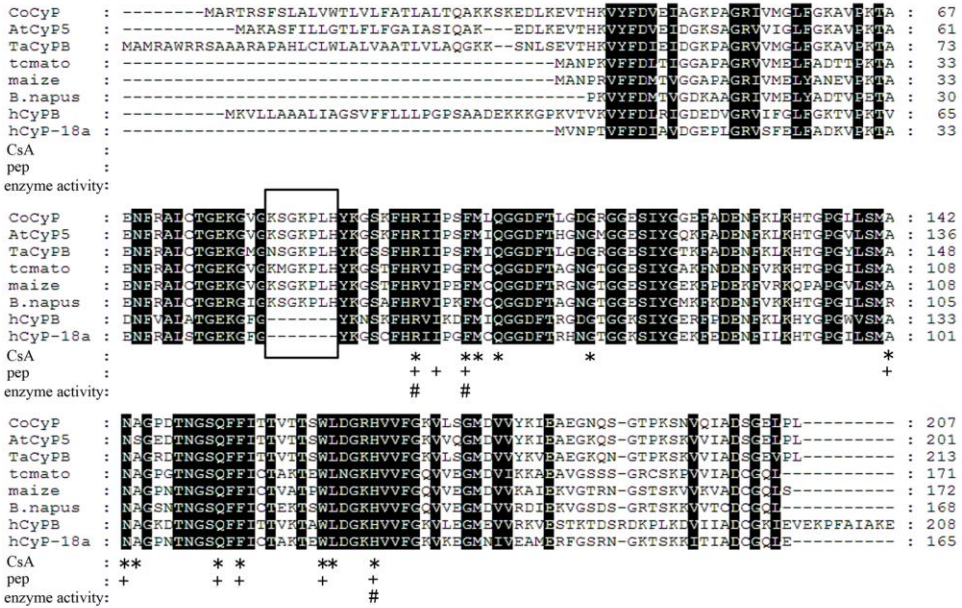


Fig. 3. Alignment of the amino acid sequence of CoCyP with sequences of other organism CyPs. Abbreviations for them are: CoCyP (this study), AtCyP5 (*A. thaliana* CyP5, CyPB; NM128850), TaCyPB (*T. aestivum*; ACF49500), tomato (M55019), maize (M55021), *B. napus* (*Brassica napus*; M55018), hCyPB (human CyPB; M60857) and hCyP-18a (human CyPA; NP_066953). High conserved amino acids are highlighted, and hyphens indicate gaps. Residues involved in Csa contact are indicated in Asterisks (*) (Pflugl *et al.*, 1993), including the key W residue (Bossard *et al.*, 1991); residues in close contact with a tetrapeptide Ala-Ala-Pro-Ala (pep) are marked with a cross (+) (Hirtzlin *et al.*, 1995). Residues involved in enzyme activity are indicated with # (Romano *et al.*, 2004). The seven-amino-acid insertion is boxed.

Alignment of the putative CoCyP amino acid sequence with those of other CyPs showed that they shared a significant degree of identity with the exception of the N-terminal and C-terminal regions (Fig. 3). The amino acid sequence of CoCyP has an overall identity of 84, 81, 69, 68, 66, 63 and 59% with those of *A. thaliana* CyP5 (CyPB, NM128850), TaCyPB (CF49500), tomato CyP (M55019), *B. napus* CyP (M55018), maize CyP (M55021), human CyPA (NP_066953) and human CyPB (M60857), respectively. Noticeably, there was a highly conserved central core domain resided in these sequences. Three consensus sequences FHRI(V)IP(K)XFML(I/C)QGGDFT, PGX-L(V)SMA(R)NA(S)GXD(N)TNGSQFFI and WLDGKHVVFG are found in the middle part of these proteins contain the Csa-binding residues (Pflugl *et al.*, 1993), the tetrapeptide Ala-Ala-Pro-Ala-binding residues (Hirtzlin *et al.*, 1995), and those required for PPIase catalysis (Romano *et al.*, 2004). There is also an insertion of seven amino acids KSGKPLH (residues 82-88) in the putative protein, which was pointed out as a characteristic of organisms containing chloroplasts and cytosolic CyPs, but of unknown function (Gasser *et al.*, 1990; Gottschalk *et al.*, 2008; Wu *et al.*, 2009).

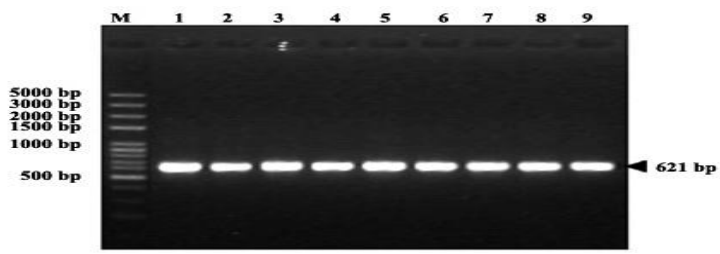


Fig. 4. The PCR result of recombinant pET-30b (+)/CoCyP

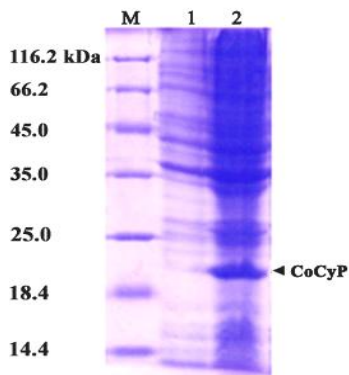


Fig. 5. The SDS-PAGE of the expressed CoCyP protein
1. The induced product of the empty pET-30b (+) by IPTG; 2. The induced product of pET-30b (+)/CoCyP by IPTG

Plasmid construction and expression: The identical PCR amplification products of a size of 621 bp of the nine recombinants were generated using the recombinant plasmid DNA as template (Fig. 4). The results of both the PCR amplification and DNA sequencing (result not shown) verified that the conducted recombinant was correct. As shown in Fig. 5, the pET-30b (+)/CoCyP recombinant was expressed and yielded a protein of about 21kDa below the predict molecular weight of 22.24 kDa. The reason is unknown, and it might be that the N-terminal signal sequence might have been removed in the *E. coli*-expressed CoCyP protein due to the absence of an ER-retention signal KDEL or AIAKE (Saito *et al.*, 1999).

Discussion

In this study, we have isolated *CoCyP*, a gene the product of which contains a hydrophobic N-terminal signal peptide predicted as ER-targeting signal from *C. oleifera* cDNA library. And the cleavage site appears conserved in ER-localized CyPs in plant e.g., Ala-Lys in *C. oleifera* and *Arabidopsis* in the N-terminus. This signal sequence of CoCyP has characteristics common to those found in the ER-localized CyPs (commonly called CyPB) (Saito *et al.*, 1999; Wu *et al.*, 2009). Moreover, CoCyP shares highest identity of amino acids with AtCyP5 (AtCyPB) (84%) and TaCyPB (81%), and the predicted result by the TargetP service also shows that CoCyP protein is a secretory pathway protein. Taken together, these evidences suggest that the CoCyP protein belongs to

to CyPB, which is found within the ER or in distal compartments along the secretory pathway (Price *et al.*, 1991) due to the presence a putative ER-targeting signal sequence at its N-terminus and the absence of an ER-retention signal KDEL or AIAKE at its C-terminus (Saito *et al.*, 1999).

The data presented here (Fig. 3) suggests that the CyP diversity can arise by addition of N-terminal of C-terminal extensions flanking the central CyP core domain (Price *et al.*, 1991). High conservation in the PPIase catalytic sites suggests that PPIase activities are both an active component of its functions and important cellular function for CyPs (Godoy *et al.*, 2000; Roman *et al.*, 2004); and the variation of PPIase activity of the ER-directed CyPB might affect storage protease folding and accumulating and assist in the folding and transport of newly synthesized seed protein (Sharma & Singh, 2003; Johnson *et al.*, 2004; Wu *et al.*, 2009). Furthermore, according to the research of Galili *et al.*, (1998), in the process of oleosin protein and oil bodies synthesis, the localized-ER CyP protein may assist in the folding and maturation of proteins and the deposition of lipid storage compounds owe to PPIase activity and molecular chaperone. Collectively, it could be postulated that the CoCyP protein may play significant roles in the processes of the seed storage and lipid synthesis.

The CoCyP gene might be helpful to improve the activity of peroxidase and play some roles in protecting cells against ROS damage combination with the current studies (Peltier *et al.*, 2002; Motohashi *et al.*, 2003). It might act as chaperone to help protecting proteins of *C. oleifera* seeds against hydrolysis or aggregation and to participate in response to stresses, perhaps by regulating appropriate folding/repairing damage proteins or in the signal transduction processes due to its PPIase activity (Chen *et al.*, 2007). Additionally, the expressed CoCyP protein in this study can lay a basis for further revealing the relationship between structure and function. The study can be also as an exploring research for immunosuppressant drugs and therapy cancer drugs due to human CyPB peptides play important roles in special immunotherapy of Leukemia and epithelial cancers (Gomi *et al.*, 1999).

Acknowledgements

This work was supported by National Natural Science Foundation of China (Grant No. 31070603) and the Graduate's Scientific Research Fundation of Central South University of Forestry and Technology (Grant No. 2009bx01).

References

- Brandts, J.F., H.R. Halvorson and M. Brennan. 1975. Consideration of the possibility that the slow step in protein denaturation reactions is due to *cis-trans* isomerism of proline residues. *Biochemistry*, 14: 4953-4963.
- Brazin, K.N., R.J. Mallis, D.B. Fulton and A.H. Andreotti. 2002. Regulation of the tyrosine kinase Itk by the peptidyl-prolyl isomerase cyclophilin A. *Proc Natl Acad Sci USA*, 99(4): 1899-1904.
- Bossard, M.J., P.L. Koser, M. Brandt, D.J. Bergsma and M.A. Levy. 1991. A single Trp121 to Ala121 mutation in human cyclophilin alters cyclosporin A affinity and peptidylprolyl isomerase activity. *Biochem. Biophys. Res. Commun.*, 176: 1142-1148.
- Chen, A.P., G.L. Wang, Z.L. Qu, C.X. Lu, N. Liu, F. Wang and G.X. Xia. 2007. Ectopic expression of ThCYP1, a stress-responsive cyclophilin gene from *Thellungiella halophila*, confers salt tolerance in fission yeast and tobacco cells. *Plant Cell Rep.*, 26(2): 237-245.

- Galat, A. 1999. Variations of sequences and amino acid compositions of proteins that sustain their biological functions: an analysis of the cyclophilin family of proteins. *Arch Biochem Biophys.*, 371: 149-162.
- Galili, G., C. Sengupta-Gopalan and A. Ceriotti. 1998. The endoplasmic reticulum of plant cells and its role in protein maturation and biogenesis of oil bodies. *Plant Mol. Bio.*, 38: 1-29.
- Gasser, C.S., D.A. Gunning, K.A. Budelier and S.M. Brown. 1990. Structure and expression of cytosolic cyclophilin/peptidyl-prolyl *cis-trans* isomerase of higher plants and production of active tomato cyclophilin in *Escherichia coli*. *Proc. Natl. Acad. Sci. USA*, 87: 9519-9523.
- Godoy, A.V., A.S. Lazzaro, C.A. Casalongue and B.S. Segundo. 2000. Expression of a *Solanum tuberosum* cyclophilin gene is regulated by fungal infection and abiotic stress conditions. *Plant Sci.*, 152: 123-134.
- Gomi, S., M. Nakao, F. Niiya, Y. Imamura, K. Kawano, S. Nishizaka, A. Hayashi, Y. Sobao, K. Oizumi and K. Itoh. 1999. A cyclophilin B gene encodes antigenic epitopes recognized by HLA-A24-restricted and tumor-specific CTLs. *J. Immunol.*, 163: 4994-5004.
- Gottschalk, M., E. Dolgener, B. Xoconostle-Cázares, W.J. Lucas, E. Komor and C. Schobert. 2008. *Ricinus communis* cyclophilin: functional characterisation of a sieve tube protein involved in protein folding. *Planta*, 228: 687-700.
- Handschumacher, R.E., M.W. Harding, J. Rice, R.J. Drugge and D.W. Speicher. 1984. Cyclophilin: a specific cytosolic binding protein for cyclosporin A. *Science*, 226(4674): 544-547.
- Hirtzlin, J., P.M. Farber, R. Franklin and A. Bell. 1995. Molecular and biochemical characterization of a plasmodium falciparum cyclophilin containing a cleavable signal sequence. *Eur. J. Biochem.*, 232: 765-772.
- Johnson, J.C. and M. Bhavé. 2004. Characterisation and physical mapping of cyclophilin A genes and identification of new classes of cyclophilins in wheat. *J. Cereal Sci.*, 40: 137-150.
- Motohashi, K., F. Koyama, Y. Nakanishi, H. Ueoka-Nakanishi and T. Hisabori. 2003. Chloroplast cyclophilin is a target protein of thioredoxin thiol modulation of the peptidyl-prolyl *cis-trans* isomerase activity. *J. Biol. Chem.*, 278(34): 31848-31852.
- Romano, P.G.N., P. Horton and J.E. Gray. 2004. The *Arabidopsis* cyclophilin gene family. *Plant Physiol.*, 134: 1268-1282.
- Pfütz, G., J. Kallen, T. Schirmer, J.N. Jansonius, M.G.M. Zurini and M.D. Walkinshaw. 1993. X-ray structure of a decameric cyclophilin-cyclosporin crystal complex. *Nature*, 361: 91-94.
- Peltier, J.B., O. Emanuelsson, D.E. Kalume, J. Ytterberg, G. Friso, A. Rudella, D.A. Liberles, L. Söderberg, P. Roepstorff, G. von Heijne and K.J. van Wijk. 2002. Central functions of the luminal and peripheral thylakoid proteome of *Arabidopsis* determined by experimentation and genome-wide prediction. *Plant Cell*, 14: 211-236.
- Price, E.R., L.D. Zydowsky, M. Jin, C.H. Baker, F.D. McKeon and C.T. Walsh. 1991. Human cyclophilin B: A second cyclophilin gene encodes a peptidyl-prolyl isomerase with a signal sequence. *Proc Natl Acad Sci USA*, 88: 1903-1907.
- Price, E.R., M. Jin, D. Lim, S. Pati, C.T. Walsh and F.D. McKeon. 1994. Cyclophilin B trafficking through the secretory pathway is altered by binding of cyclosporin A. *Proc Natl Acad Sci USA*, 91: 3931-3935.
- Rycyzyn, M.A. and C.V. Clevenger. 2002. The intranuclear prolactin/cyclophilin B complex as a transcriptional inducer. *Proc Natl Acad Sci USA*, 99: 6790-6795.
- Saito, T., Y. Niwa, H. Ashida, K. Tanaka, M. Kawamukai, H. Matsuda and T. Nakagawa. 1999. Expression of a gene for cyclophilin which contains an amino-terminal endoplasmic reticulum-targeting signal. *Plant Cell Physiol.*, 40(1): 77-87.
- Sambrook, J. and D.W. Russell. 1999. Plasmids and their usefulness in molecular cloning. Expression of cloned genes in *Escherichia coli*. In: *Molecular cloning: A laboratory manual*. (3rd Ed.). P.T. Huang (Trans.). 2003. Science Press, Beijing, pp. 26-30, 1228-1236 (in Chinese).
- Sharma, A.D. and P. Singh. 2003. Comparative studies on drought-induced changes in peptidyl prolyl *cis-trans* isomerase activity in drought-tolerant and susceptible cultivars of *Sorghum bicolor*. *Curr. Sci.*, 84: 911-918.

- Shieh, B.H., M.A. Stamnes, S. Seavello, G.L. Harris and C.S. Zuker. 1989. The *ninaA* gene required for visual transduction in *Drosophila* encodes a homologue of cyclosporin A-binding protein. *Nature*, 338: 67-70.
- Tan, X.F., F.M. Hu, L.S. Xie, M.W. Shi, D.Q. Zhang, T.N. Wuyun. 2006. Construction of EST library of *Camellia oleifera* and analysis of main expressed genes of *Camellia oleifera* seeds. *Sci. Silvae Sin.*, 42(1): 43-48 (in Chinese).
- Wang, B.M. and X.F. Tan. 2008. Study on the structure, function and expressive regulation of the plant cyclophilin genes. *Journal of Central South University of Forestry & Technology*, 28(1): 168-174 (in Chinese).
- Wu, H., E. Wensley and M. Bhawe. 2009. Identification and analysis of genes encoding a novel ER-localised *Cyclophilin B* in wheat potentially involved in storage protein folding. *Plant Sci.*, 176(3): 420-432.
- Zhuang, R.L. 2008. Comprehensive utilization of tea-oil fruits. In: *Tea-oil tree (Camellia oleifera L.) of China*. (2nd Ed.). Chinese Forestry Publish House, Beijing, pp. 339-346 (in Chinese).

(Received for publication 22 March 2009)